



16

Queens Court , 114 East Clyde Street, Helensburgh, Argyll And Bute. G84 7AH





16

Queens Court , 114 East Clyde Street, Helensburgh, Argyll And Bute. G84 7AH



Located on East Clyde Street, Queens Court is a beautifully maintained development which was formerly the Queens Hotel. Apartment 16 is a rarely available main door ground floor property within the original hotel building and offers undoubtedly some of the finest views available on the shore front of Helensburgh.

The Apartment itself is bright and spacious and offers one of only a handful of main door properties within the development located on the ground floor. On entering there is a welcoming hallway which has two useful store cupboards. The Lounge is a beautiful room with dual aspects and ample space for a dining table and chairs if required. The Lounge has patio doors accessing a private outdoor patio which enjoys the breathtaking setting and beautiful communal gardens. The Kitchen is fitted with modern white gloss units with a breakfast bar area ideal for informal dining. The Kitchen has a range of integral appliances and space for free-standing white goods. There are two lovely spacious double bedrooms both of which have built-in wardrobes and the main has the luxury of an En-suite shower room. The family bathroom is also modern in design and both have been fitted with neutral suites and wet wall for ease of maintenance.

Externally Queens Court has outstanding communal areas and grounds offering direct views over the Clyde Estuary, Rosneath Peninsula and Ardmore Point. The development is meticulously maintained with the car park having just been resurfaced. Apartment 16 also has the advantage of a private garage. Queens Court is ideally positioned East of the town centre which can be reached by foot or a short car journey.

EPC Band D
Council Tax Band E



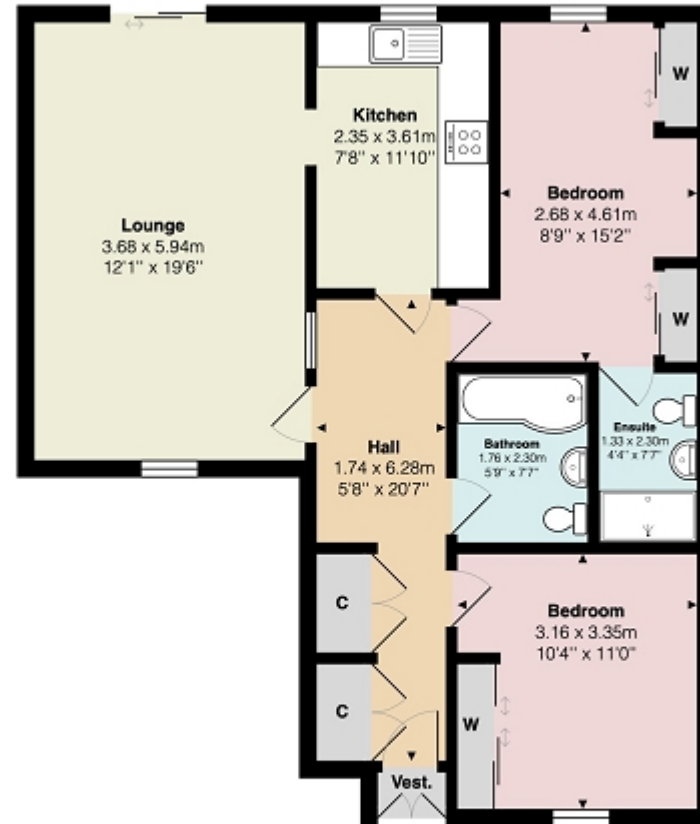
16
Queens Court , 114 East Clyde Street, Helensburgh, Argyll And Bute. G84 7AH





Measurements

Hallway	20' 07" Max x 5' 08" Max or 6.27m Max x 1.73m Max
Lounge	19' 06" x 12' 01" or 5.94m x 3.68m
Kitchen	11' 10" x 7' 08" or 3.61m x 2.34m
Bedroom 1	15' 02" Max x 8' 09" Max or 4.62m Max x 2.67m Max
En Suite	7' 07" x 4' 04" or 2.31m x 1.32m
Bedroom 2	11' 0" Max x 10' 04" Max or 3.35m Max x 3.15m Max
Bathroom	7' 07" x 5' 09" or 2.31m x 1.75m



Contact our office for further details



rightmove
find your happy

NOTE: These details have been prepared for guidance. If there is any point which you find misleading please contact McArthur Stanton where further information is available. Measurements have been taken from wall to wall, unless otherwise stated, and have been recorded by use of a sonic beam. Services and appliances not tested. Details have been prepared by June 2024. If required, we can arrange for a property market appraisal to be carried out on your existing property.

16

Queens Court , 114 East Clyde Street, Helensburgh, Argyll And Bute. G84 7AH

