



**McArthur
Stanton**
Letting & Estate Agents

Glenlee

Kirkton Road, Cardross, Argyll & Bute . G82 5PN

Glenlee

Kirkton Road, Cardross, Argyll & Bute . G82 5PN





Glenlee
Kirkton Road, Cardross, Argyll & Bute . G82 5PN



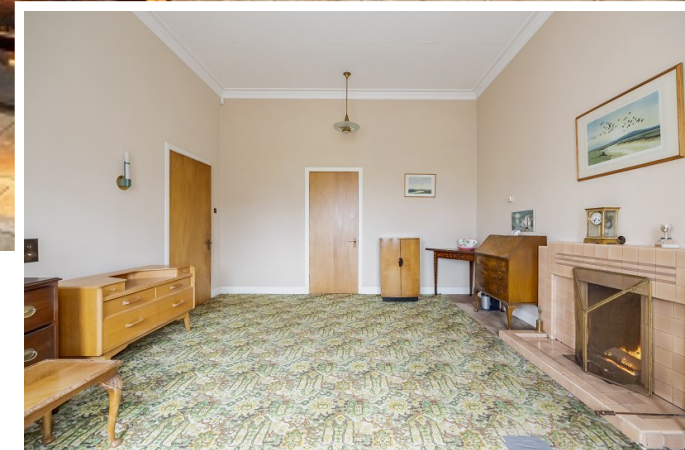
Commanding a wonderful position within the beautiful conservation village of Cardross "Glenlee" is a magnificent traditional sandstone villa originally dating back to the early 1900's and owned since completion by the current family.

"Glenlee" sits with a glorious plot offering a wide variety of mature planting and vast areas of lawn. The property is accessed via a gated driveway which offers parking for multiple vehicles and has the advantage of two detached garages.





Glenlee
Kirkton Road, Cardross, Argyll & Bute . G82 5PN





Measurements



Ground Floor

First Floor

All measurements are approximate and for display purposes only

Contact our office for further details



NOTE: These details have been prepared for guidance. If there is any point which you find misleading please contact McArthur Stanton where further information is available. Measurements have been taken from wall to wall, unless otherwise stated, and have been recorded by use of a sonic beam. Services and appliances not tested. Details have been prepared by May 2024. If required, we can arrange for a property market appraisal to be carried out on your existing property.

Glenlee

Kirkton Road, Cardross, Argyll & Bute . G82 5PN

