



**McArthur
Stanton**
Letting & Estate Agents

Flat 2

Dalandhui House, Dalandhui Lane, Garelochhead, Helensburgh, Argyll And Bute. G84 0BE

Flat 2

Dalandhui House, Dalandhui Lane, Garelochhead, Helensburgh, Argyll And Bute. G84 0BE





Flat 2

Dalandhui House, Dalandhui Lane, Garelochhead, Helensburgh, Argyll And Bute, G84 0BE

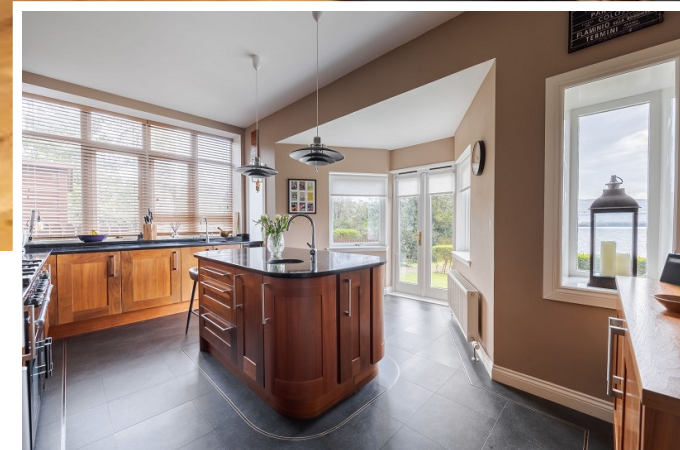


Dalandhui House forms part of a small intimate Loch side development on the outskirts of the village of Garelochhead. Flat 2 is arguably one of the finest properties within the development with uninterrupted views over the Gareloch and a gorgeous private garden.





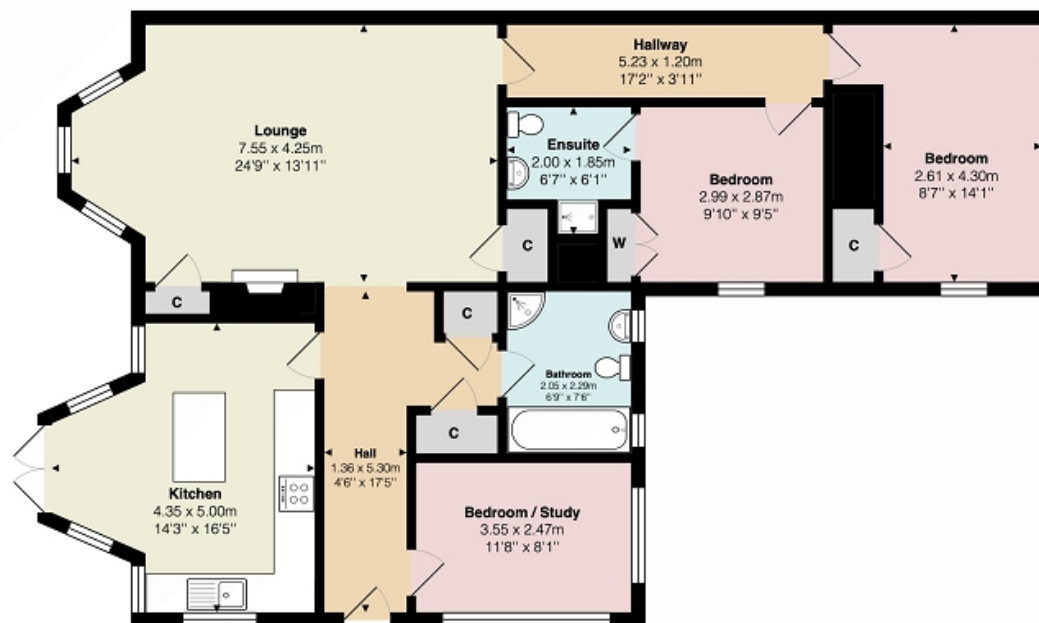
Flat 2
Dalandhui House, Dalandhui Lane, Garelochhead, Helensburgh, Argyll And Bute. G84 0BE





Measurements

Hallway	17' 05" x 4' 06" Max Max or 5.31m x 1.37m Max
Lounge	24' 09" Max x 13' 11" Max or 7.54m Max x 4.24m Max
Kitchen	16' 05" Max x 14' 03" Max or 5.00m Max x 4.34m Max
Hallway	17' 02" x 3' 11" or 5.23m x 1.19m
Bedroom 1	9' 10" x 9' 05" or 3.00m x 2.87m
En Suite	6' 07" x 6' 01" or 2.01m x 1.85m
Bedroom 2	14' 03" Max x 8' 07" Max or 4.34m Max x 2.62m Max
Bedroom 3	11' 08" x 8' 01" or 3.56m x 2.46m
Bathroom	7' 06" x 6' 09" or 2.29m x 2.06m



All measurements are approximate and for display purposes only

Contact our office for further details



rightmove
find your happy

NOTE: These details have been prepared for guidance. If there is any point which you find misleading please contact McArthur Stanton where further information is available. Measurements have been taken from wall to wall, unless otherwise stated, and have been recorded by use of a sonic beam. Services and appliances not tested. Details have been prepared by May 2024. If required, we can arrange for a property market appraisal to be carried out on your existing property.

Flat 2

Dalandhui House, Dalandhui Lane, Garelochhead, Helensburgh, Argyll And Bute. G84 0BE

