



7

Viewfield Terrace, Lochgoilhead, Cairndow, Argyll And Bute. PA24 8AA





7
Viewfield Terrace, Lochgoilhead, Cairndow, Argyll And Bute. PA24 8AA



Located within the picturesque village of Lochgoilhead, 7 Viewfield Terrace is a charming and beautifully presented traditional mid-terrace villa offering breathtaking views of surrounding mountains and partial views towards Loch Goil.

Internally the property is in lovely condition throughout and retains a wealth of period features including detailed cornicing and woodwork. On entering there is a welcoming porch and hallway. The Lounge overlooks the front of the property and has a stunning bay window and working fire. The Dining Room is positioned to the rear and has aspects over the private garden. There is a useful store cupboard and the addition of a gorgeous wood-burning stove which has been installed recently. The Kitchen is accessed from the Dining Room and is fitted with a range of units and worktops. There is ample space for free-standing white goods and a courtesy door leading to the garden.

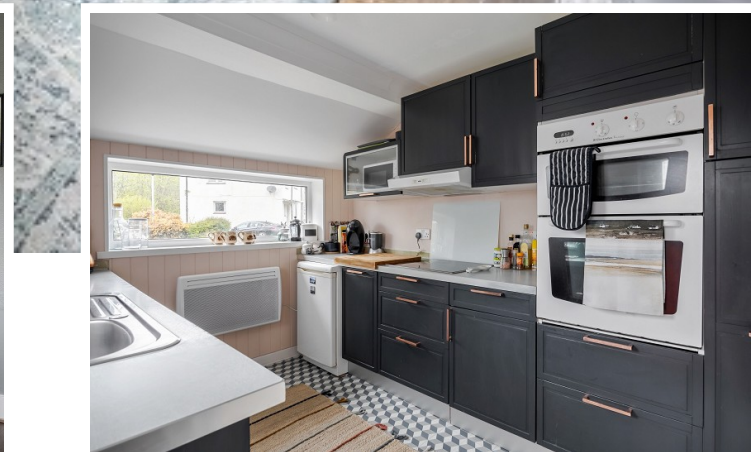
Upstairs the property has three good-sized bedrooms. The main bedroom is particularly spacious and has cleverly designed alcove storage offering hanging space. The main bedroom also has a bay window offering views towards Loch Goil. The bathroom has also been replaced in recent times and has been fitted with a modern suite and tiling.

Externally the property has a good-sized level garden which has a large timber garage and parking space. The village is ideal for outdoor pursuits with Drimsynie offering leisure and restaurant facilities. Glasgow can be reached in just over an hour with Loch Lomond being around twenty minutes away.

EPC Band F
Council Tax Band D



7
Viewfield Terrace, Lochgoilhead, Cairndow, Argyll And Bute. PA24 8AA



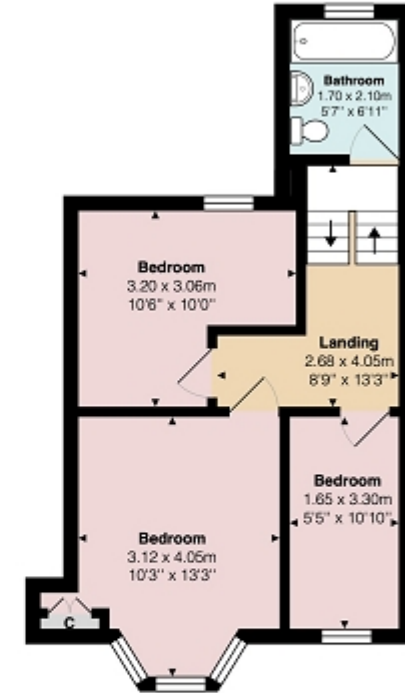


Measurements

Hallway	20' 02" Max x 3' 03" Max or 6.15m Max x 0.99m Max
Lounge	16' 05" Max x 11' 09" Max or 5.00m Max x 3.58m Max
Dining Room	12' 04" x 11' 09" Max Max or 3.76m x 3.58m Max
Kitchen	9' 11" x 7' 08" or 3.02m x 2.34m
Bathroom	6' 11" x 5' 07" or 2.11m x 1.70m
Landing	13' 03" Max x 8' 09" Max or 4.04m Max x 2.67m Max
Bedroom 1	13' 03" Max x 10' 03" Max or 4.04m Max x 3.12m Max
Bedroom 2	10' 06" Max x 10' 0" Max or 3.20m Max x 3.05m Max
Bedroom 3	10' 10" x 5' 05" or 3.30m x 1.65m



Ground Floor



First Floor

Contact our office for further details



NOTE: These details have been prepared for guidance. If there is any point which you find misleading please contact McArthur Stanton where further information is available. Measurements have been taken from wall to wall, unless otherwise stated, and have been recorded by use of a sonic beam. Services and appliances not tested. Details have been prepared by April 2024. If required, we can arrange for a property market appraisal to be carried out on your existing property.

7

Viewfield Terrace, Lochgoilhead, Cairndow, Argyll And Bute. PA24 8AA

