



**McArthur
Stanton**
Letting & Estate Agents

Flat 1

66, East Clyde Street, Helensburgh, Argyll And Bute. G84 7PG

Flat 1

66, East Clyde Street, Helensburgh, Argyll And Bute. G84 7PG





Flat 1
66, East Clyde Street, Helensburgh, Argyll And Bute. G84 7PG



Located on the sea front of Helensburgh just east of the town centre, Flat 1, 66 East Clyde Street is a spacious one-bedroom first floor flat that has the most fabulous direct views over the Clyde Estuary.

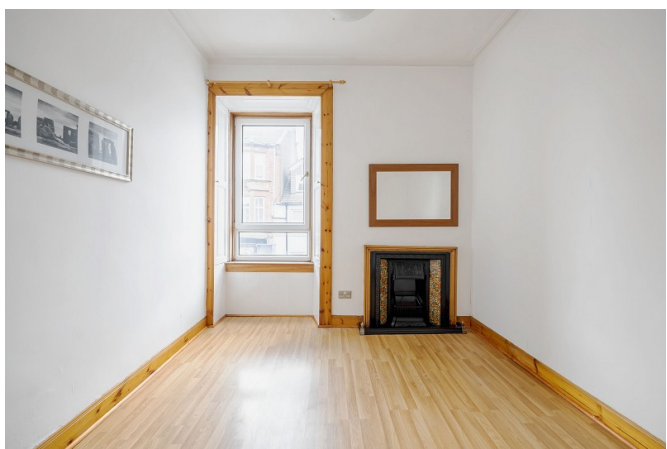
Internally the flat is bright and airy and offers around 560 square feet of freshly decorated accommodation. Positioned on the first floor of the building the flat itself has a welcoming hallway which includes a useful store cupboard. The Lounge is a lovely size and has beautiful detailed cornicing, feature fireplace and the most spectacular views over the water. The Kitchen has aspects over East Clyde Street and is fitted with modern units and worktops. The kitchen has ample space for a good-sized dining table and chairs and a large pantry. There is a well-proportioned double bedroom also with a lovely fireplace and a bathroom with heated towel rail. The property has gas central heating throughout.

Externally to the rear of the building is a large south facing communal garden which has an amazing position with views over the Beach and River Clyde. The communal staircase has been freshly decorated in recent times and is accessed via a secure door entry system.

EPC Band C
Council Tax Band C



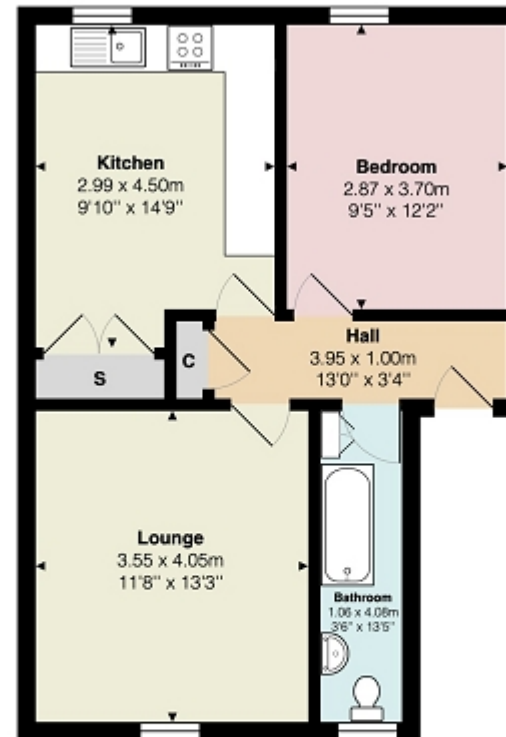
Flat 1
66, East Clyde Street, Helensburgh, Argyll And Bute. G84 7PG





Measurements

Hallway	13' 0" x 3' 04" or 3.96m x 1.02m
Lounge	13' 03" x 11' 08" or 4.04m x 3.56m
Kitchen	14' 09" Max x 9' 10" Max or 4.50m Max x 3.00m Max
Bedroom 1	12' 02" x 9' 05" or 3.71m x 2.87m
Bathroom	13' 05" Max x 3' 06" Max or 4.09m Max x 1.07m Max



Contact our office for further details



rightmove
find your happy

NOTE: These details have been prepared for guidance. If there is any point which you find misleading please contact McArthur Stanton where further information is available. Measurements have been taken from wall to wall, unless otherwise stated, and have been recorded by use of a sonic beam. Services and appliances not tested. Details have been prepared by April 2024. If required, we can arrange for a property market appraisal to be carried out on your existing property.

Flat 1

66, East Clyde Street, Helensburgh, Argyll And Bute. G84 7PG

