



Norwith Hill

Newington, Doncaster, DN10 6BU

£4,000 PCM

A stunning 6 bedroom house with fabulous gardens, ample off road parking and vast living space.
UNFURNISHED AND AVAILABLE DECEMBER 2025

- Superbly well proportioned family home of around 4,800 sq ft
- Most attractive rural setting, positioned amidst open countryside
- Impressive, private grounds approaching 0.5 acre
- 6 bedrooms - 4 bath / shower rooms
- High speed internet / mains gas
- Plenty of parking and double garage
- Close to central Bawtry (1.5 miles)
- UNFURNISHED AND AVAILABLE DECEMBER 2025
- COUNCIL TAX BAND: G
- EPC RATING: B

Viewing

Please contact our ELR Europa Link Office on 01142689900 if you wish to arrange a viewing appointment for this property or require further information.



6



4



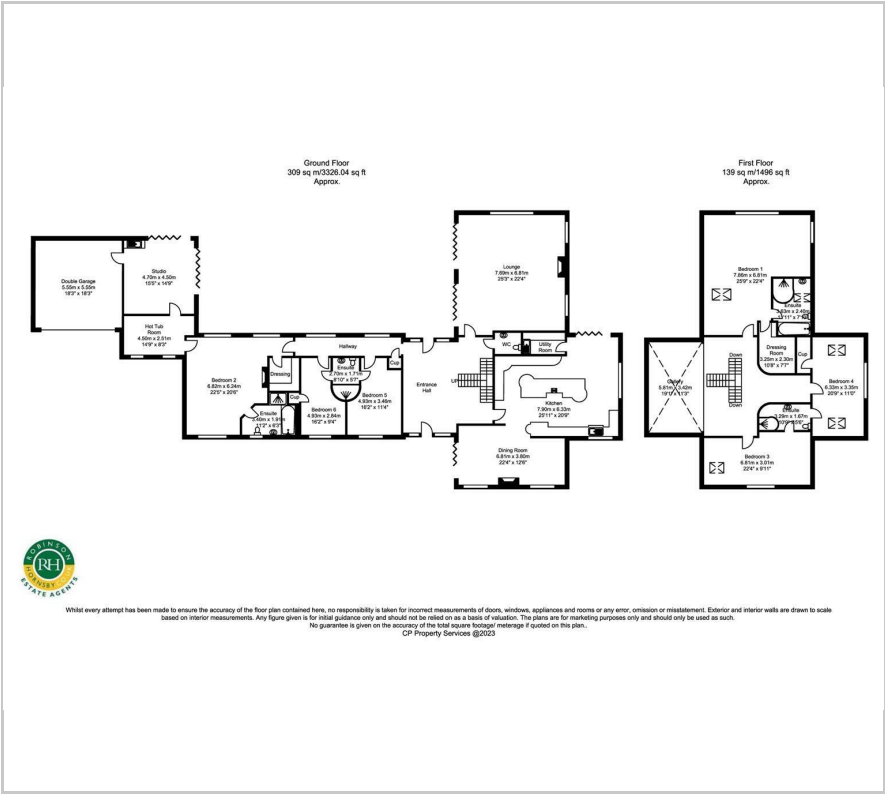
4



B



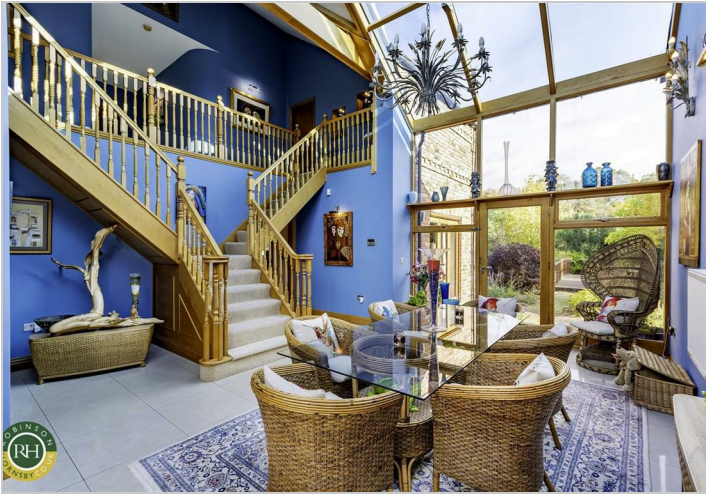
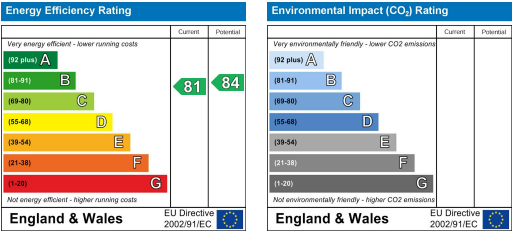
Floor Plan



Area Map



Energy Efficiency Graph



These particulars, whilst believed to be accurate are set out as a general outline only for guidance and do not constitute any part of an offer or contract. Intending purchasers should not rely on them as statements of representation of fact, but must satisfy themselves by inspection or otherwise as to their accuracy. No person in this firms employment has the authority to make or give any representation or warranty in respect of the property.