



## Apartment 1 Bluebell House Riverdale Road

Endcliffe Park, Sheffield, S10 3FZ

£1,700 PCM

A quite superb and generously proportioned ground floor apartment that encompasses over 1022 square feet of accommodation. FURNISHED AND AVAILABLE NOW

- Ground floor executive apartment
- Gated development with intercom access and electric gates.
- Open plan living kitchen with high quality fittings including granite worktops and superb open plan living.
- Villeroy and Boch fittings in both the main bathroom and ensuite.
- Two double bedrooms, one with an ensuite.
- Secure gated development with undercroft parking and an allocated space for one vehicle and communal residents spaces.
- South facing views from the living room and glazed balcony onto Endcliffe Park.
- Within walking distance to the main city hospitals and universities.
- Under floor heating system (from the boiler) and double glazed throughout combining to provide an excellent EPC rating of B82.
- Council Tax Band D - FURNISHED AND AVAILABLE NOW

### Viewing

Please contact our ELR Europa Link Office on 01142689900 if you wish to arrange a viewing appointment for this property or require further information.



2



2

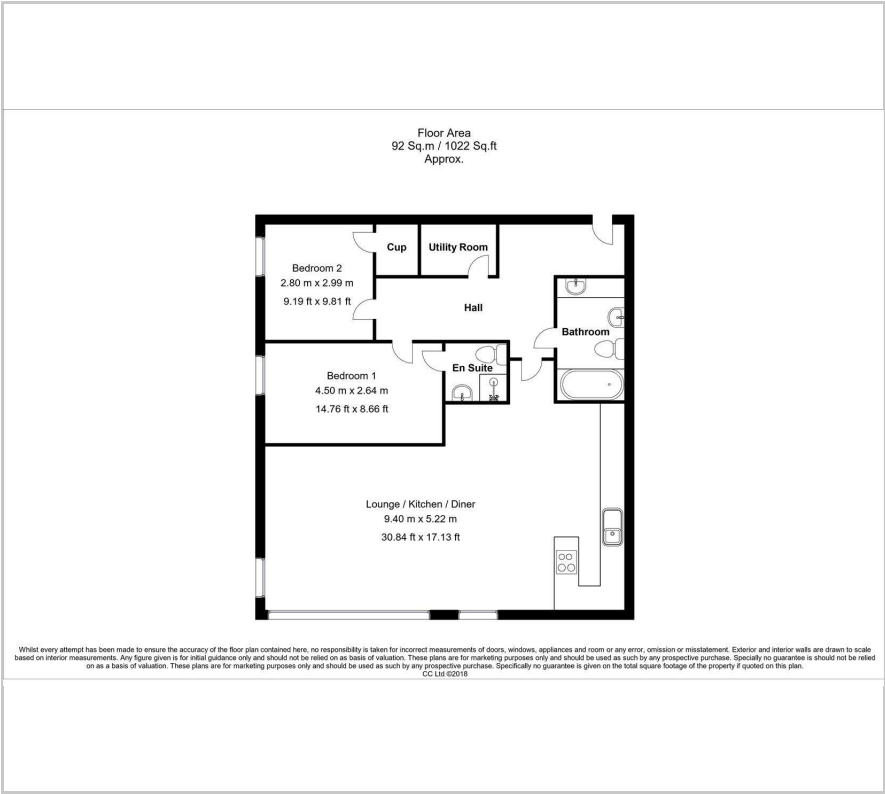


1



B

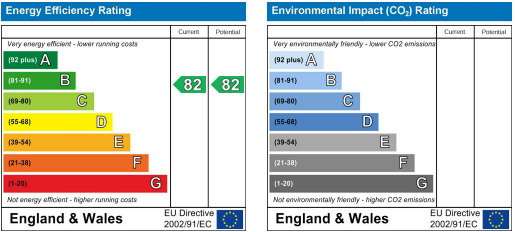
Floor Plan



Area Map



Energy Efficiency Graph



These particulars, whilst believed to be accurate are set out as a general outline only for guidance and do not constitute any part of an offer or contract. Intending purchasers should not rely on them as statements of representation of fact, but must satisfy themselves by inspection or otherwise as to their accuracy. No person in this firms employment has the authority to make or give any representation or warranty in respect of the property.