



## 2d Somersby Avenue

, Doncaster, DN5 8HB

£750 PCM

A lovely two bedroom apartment situated in this prime location. This property is available 7th July 2025 and an internal viewing is a must to appreciate the size and quality of fixtures and fittings, don't miss out book your viewing today!

COUNCIL TAX BAND A

- First floor apartment
- Two Bedrooms
- Modern Fittings
- Open Plan Kitchen and Lounge
- Shower Room
- Neutral Decor
- Off Road Parking
- Patio
- Council Tax Band: A
- AVAILABLE 7TH JULY 2025

### Viewing

Please contact our ELR Europa Link Office on 01142689900 if you wish to arrange a viewing appointment for this property or require further information.



2



1



1

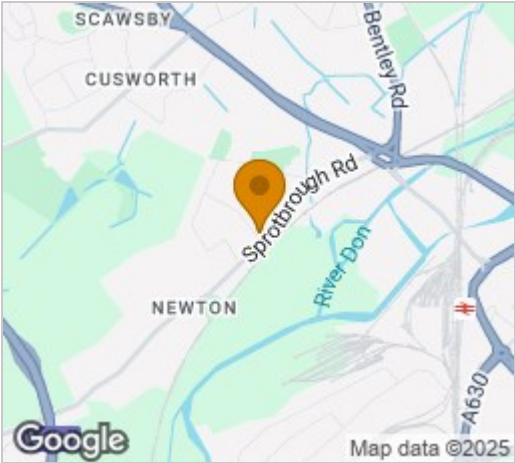


D

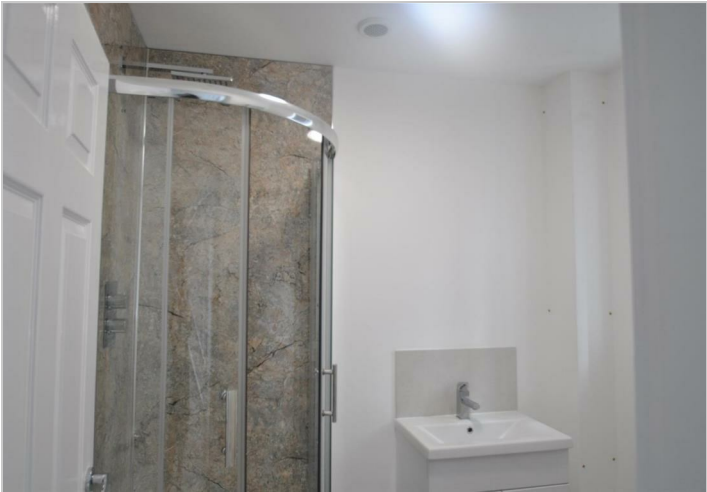
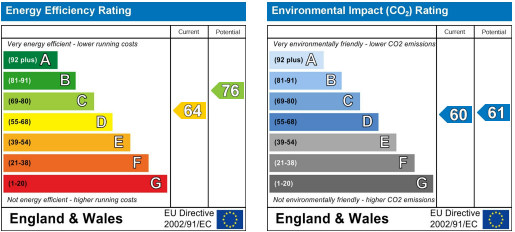
Floor Plan



Area Map



Energy Efficiency Graph



These particulars, whilst believed to be accurate are set out as a general outline only for guidance and do not constitute any part of an offer or contract. Intending purchasers should not rely on them as statements of representation of fact, but must satisfy themselves by inspection or otherwise as to their accuracy. No person in this firms employment has the authority to make or give any representation or warranty in respect of the property.