



## 32 Garden Crescent

Grange Estate, Rotherham, S60 3HX

### £1,300 Per Calendar Month

A fully refurbished two bedroom modern detached bungalow situated in highly sought after area. Gardens to the front side and rear, off road parking and garage. UNFURNISHED AND AVAILABLE 16TH JUNE 2025

- Two bedroom detached bungalow (fully refurbished 2022)
- Modern kitchen diner
- Lovely shower room with WC and basin
- Large living room
- Two double bedrooms
- Garden to the front, side and rear
- Off road parking and single garage
- Great location
- UNFURNISHED - COUNCIL TAX BAND: D
- AVAILABLE 16TH JUNE 2025

### Viewing

Please contact our ELR Europa Link Office on 01142689900 if you wish to arrange a viewing appointment for this property or require further information.



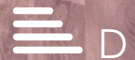
2



1



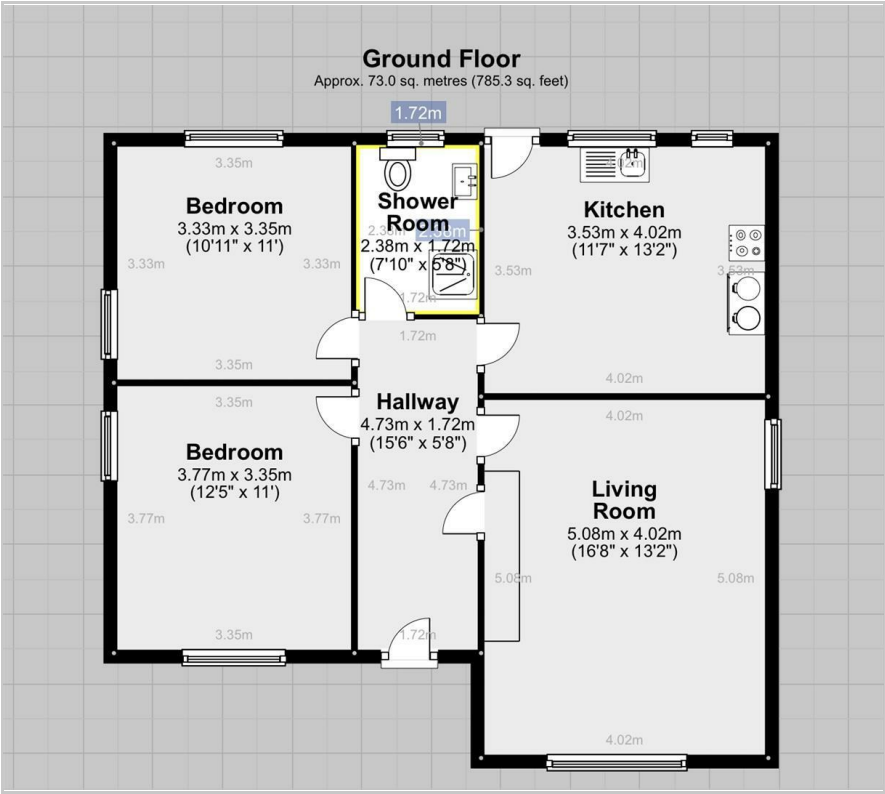
1



D



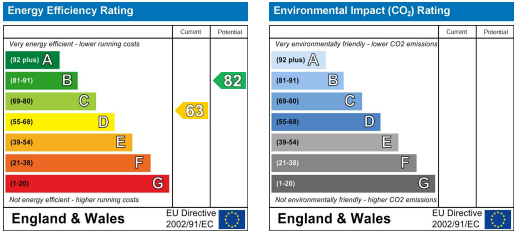
Floor Plan



Area Map



Energy Efficiency Graph



These particulars, whilst believed to be accurate are set out as a general outline only for guidance and do not constitute any part of an offer or contract. Intending purchasers should not rely on them as statements of representation of fact, but must satisfy themselves by inspection or otherwise as to their accuracy. No person in this firms employment has the authority to make or give any representation or warranty in respect of the property.