



1 Rushley Close

Auckley, Doncaster, DN9 3HN

£995 PCM

A three bedroom detached family home situated in a lovely village giving easy access to Doncaster and surrounding area. AVAILABLE 10th June 2025 ON AN UNFURNISHED BASIS

- Three bedroom detached house
- Off road parking and garage
- Large open plan living and dining room
- Conservatory
- Two double and one single
- Modern bathroom with shower over bath
- UNFURNISHED
- AVAILABLE 10th June 2025
- COUNCIL TAX BAND: C

Viewing

Please contact our ELR Europa Link Office on 01142689900 if you wish to arrange a viewing appointment for this property or require further information.



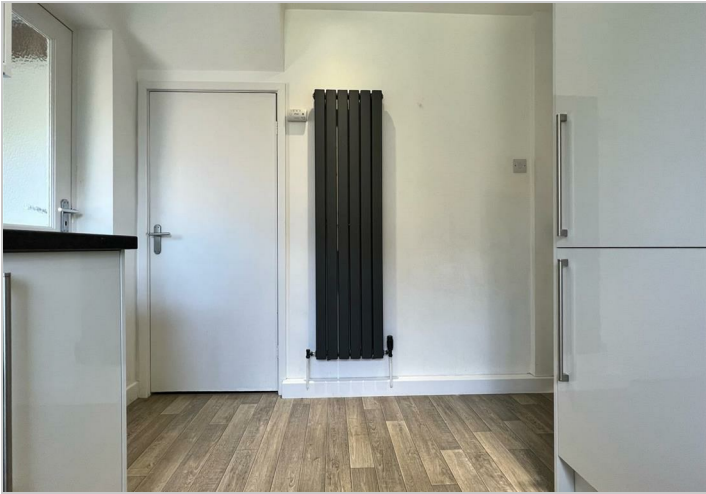
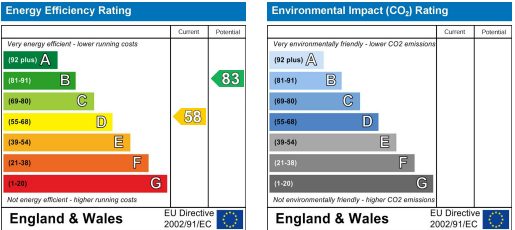
Floor Plan



Area Map



Energy Efficiency Graph



These particulars, whilst believed to be accurate are set out as a general outline only for guidance and do not constitute any part of an offer or contract. Intending purchasers should not rely on them as statements of representation of fact, but must satisfy themselves by inspection or otherwise as to their accuracy. No person in this firms employment has the authority to make or give any representation or warranty in respect of the property.