



## 6 Brincliffe Crescent

Sheffield, S11 9AW

**£6,500 PCM**

This magnificent Grade II Listed French Gothic Style mansion was built in 1874 and still retains many of its original features including the living room, dining room and turret room. The kitchen is finished to the highest specifications and is sure to impress. OFFERED ON A PART FURNISHED BASIS AND AVAILABLE 2ND JUNE 2025.

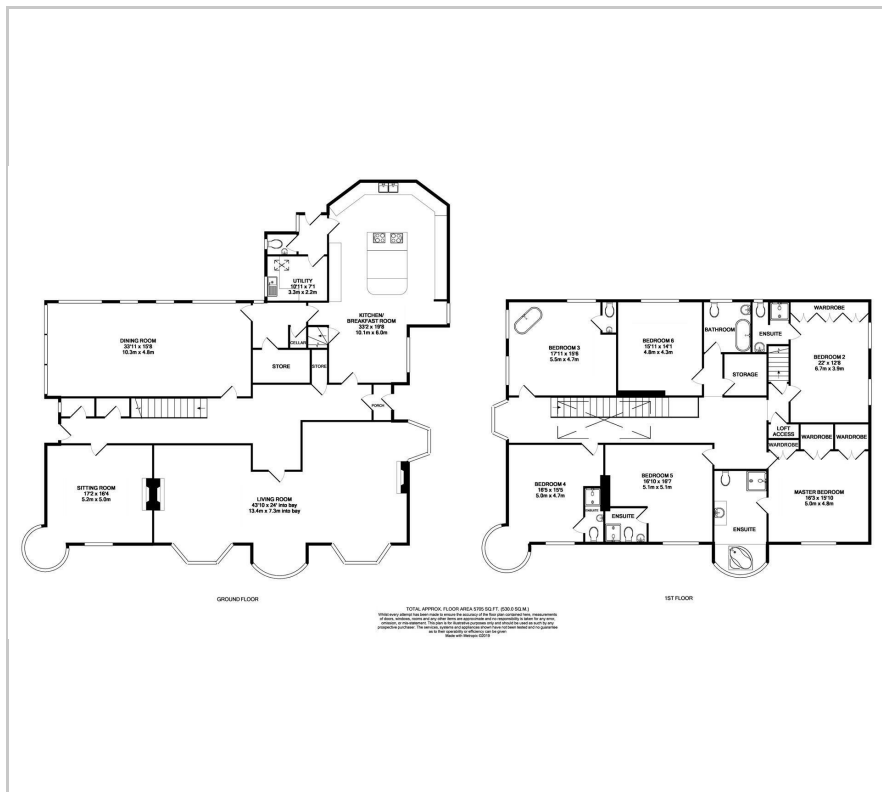
- Grade II listed building built in 1874
- Magnificent kitchen with built in appliances
- large formal dining room with stain glass windows
- Turret room which is ideal for a snug or office
- Beautiful living room with views over the patio and garden
- 6 Double bedrooms with en-suites
- Ample off road parking including carport
- PART FURNISHED
- AVAILABLE 2ND JUNE 2025
- COUNCIL TAX BAND: G

### Viewing

Please contact our ELR Europa Link Office on 01142689900 if you wish to arrange a viewing appointment for this property or require further information.



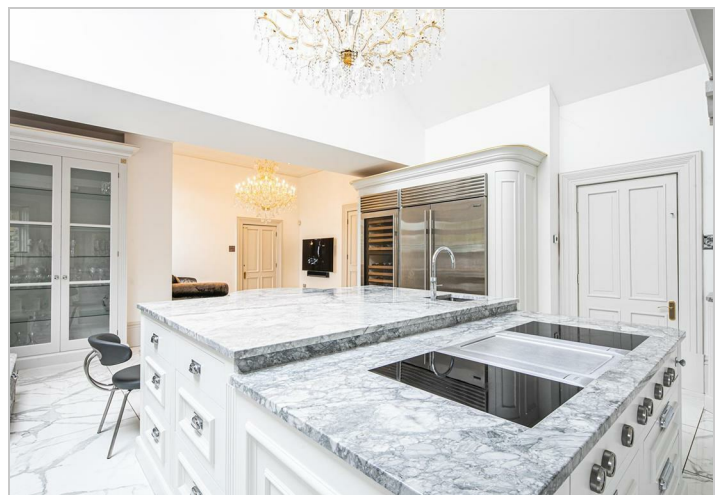
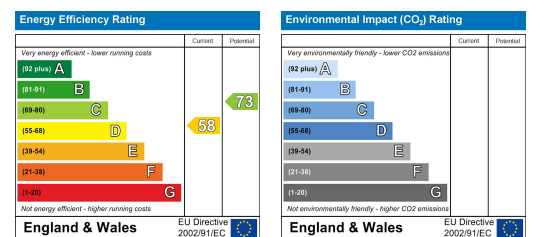
## Floor Plan



## Area Map



### Energy Efficiency Graph



These particulars, whilst believed to be accurate are set out as a general outline only for guidance and do not constitute any part of an offer or contract. Intending purchasers should not rely on them as statements of representation of fact, but must satisfy themselves by inspection or otherwise as to their accuracy. No person in this firm's employment has the authority to make or give any representation or warranty in respect of the property.

Edon Lockwood and Riddle Hart Shaw Building, Suite 8 Europa Link, Sheffield Business Park, South Yorkshire, S9 1XU  
Tel: 01142689900 Email: [lettings@elr.co.uk](mailto:lettings@elr.co.uk) <https://www.elr.co.uk>