



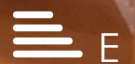
40 Beehive Road , Sheffield, S10 1EP £1,100 PCM

A spacious property available to let for up to 3 sharers.
Offered on a furnished basis and available July 2025

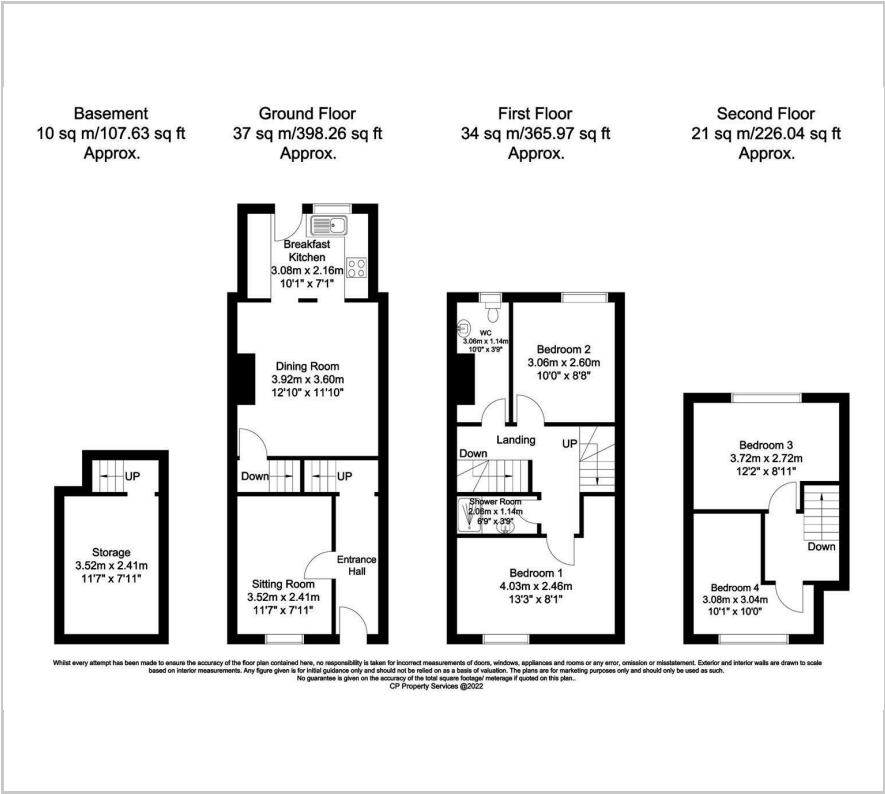
- Available for up to 3 shares
- Offered on a furnished basis
- Open plan, living room and kitchen
- Dining room
- Modern shower room
- Three double bedrooms and one spare room
- Available July 2025
- Furnished
- Council tax band: A

Viewing

Please contact our ELR Europa Link Office on 01142689900 if you wish to arrange a viewing appointment for this property or require further information.



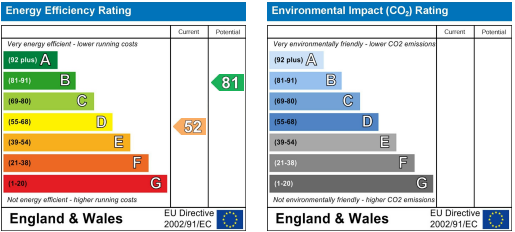
Floor Plan



Area Map



Energy Efficiency Graph



These particulars, whilst believed to be accurate are set out as a general outline only for guidance and do not constitute any part of an offer or contract. Intending purchasers should not rely on them as statements of representation of fact, but must satisfy themselves by inspection or otherwise as to their accuracy. No person in this firm's employment has the authority to make or give any representation or warranty in respect of the property.