



12 Whirlowdale Rise

, Sheffield, S11 9LS

£3,250 PCM

A quite spectacular detached home boasting an immaculate interior with luxurious fixtures and fittings in all the right places, all complemented by beautifully landscaped, south facing gardens.

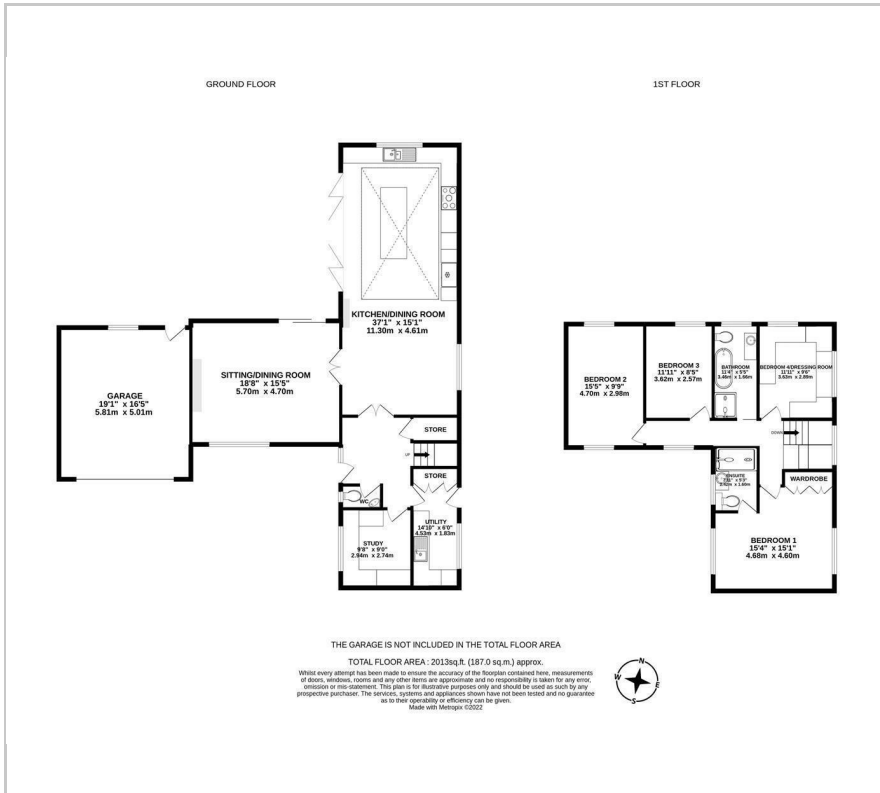
- Four double bedrooms with one currently utilised as a walk in dressing room
- Two luxurious bathrooms with modern fittings framed by elegant tiling.
- State of the art, living kitchen with bi-folding doors to the garden and a large lantern light over the central island unit.
- Spacious sitting room with remote controlled, Dru fire.
- Custom made fittings in the kitchen, study, dressing room and principal suite by Penistone Interiors.
- Contemporary, glass staircase by Abbot Wade.
- Double garage with electric doors and loft storage.
- UNFURNISHED
- AVAILABLE 16TH AUGUST 2024
- COUNCIL TAX BAND: G - EPC RATING: C

Viewing

Please contact our ELR Europa Link Office on 01142689900 if you wish to arrange a viewing appointment for this property or require further information.



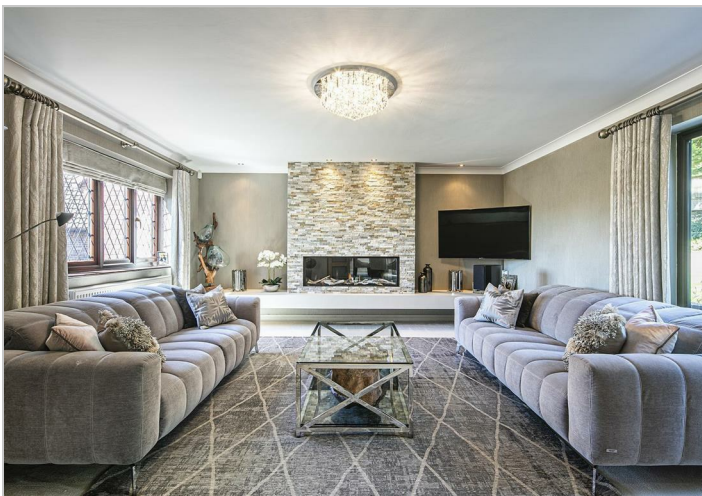
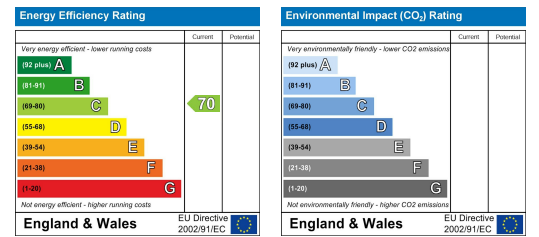
Floor Plan



Area Map



Energy Efficiency Graph



These particulars, whilst believed to be accurate are set out as a general outline only for guidance and do not constitute any part of an offer or contract. Intending purchasers should not rely on them as statements of representation of fact, but must satisfy themselves by inspection or otherwise as to their accuracy. No person in this firm's employment has the authority to make or give any representation or warranty in respect of the property.