

29 Farleigh Drive

Harworth, Doncaster, DN11 8SW

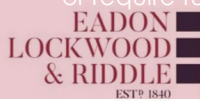
£825 PCM

A fantastic opportunity to rent a recently constructed 2 double bedroom end mews house situated on this sought after modern development of Lancaster Gardens. AVAILABLE 1ST MAY 2024.

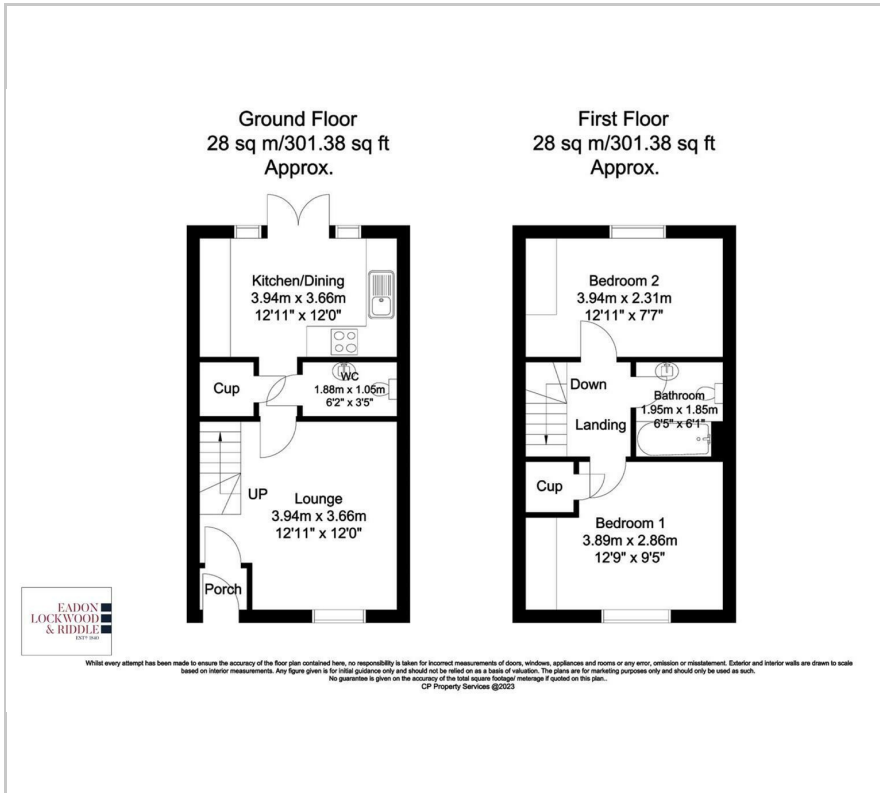
- End mews house on the Lancaster Gardens estate
- Two double bedrooms
- Stunning open plan kitchen/dining room with a range of integrated appliances
- Benefitting from a range of upgraded barrat extras
- Parking for two cars
- Landscaped rear enclosed garden
- Sought after modern development
- Ideally located close to local amenities and motorway connections
- Immaculately presented throughout
- Council tax band A - PART FURNISHED - AVAILABLE 1ST MAY 2024

Viewing

Please contact our ELR Europa Link Office on 01142689900 if you wish to arrange a viewing appointment for this property or require further information.



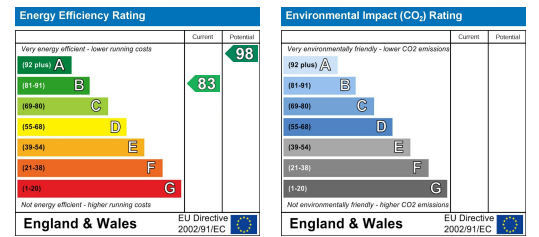
Floor Plan



Area Map



Energy Efficiency Graph



These particulars, whilst believed to be accurate are set out as a general outline only for guidance and do not constitute any part of an offer or contract. Intending purchasers should not rely on them as statements of representation of fact, but must satisfy themselves by inspection or otherwise as to their accuracy. No person in this firm's employment has the authority to make or give any representation or warranty in respect of the property.