

Sunnymede Road, Nailsea

£499,950

🛏 3 🚿 1 🛋 3



A Stunning, Fully Renovated 3-Bedroom Detached Bungalow with Woodland Views in Nailsea.

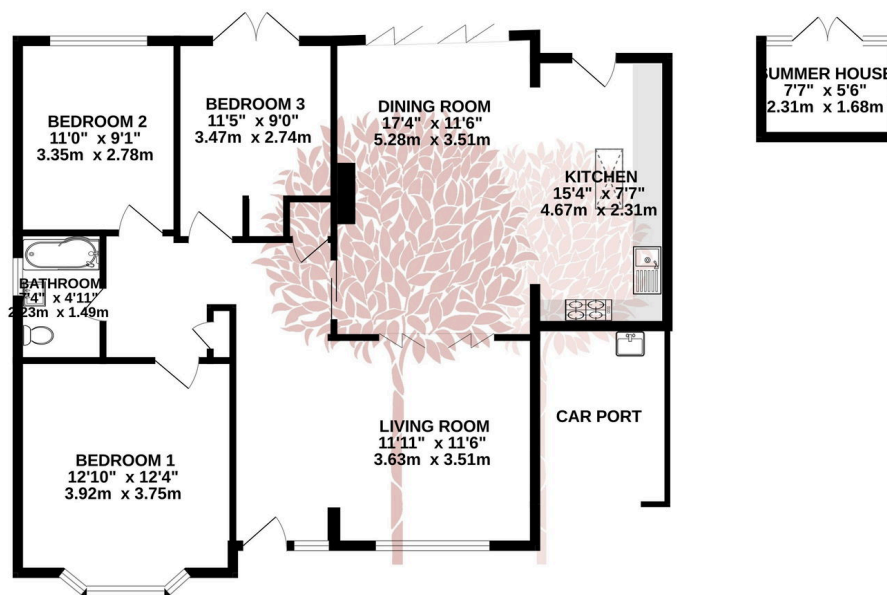
Set in a highly sought-after location, this beautifully refurbished three-bedroom detached bungalow offers an exceptional combination of style, space, and light. Close to Nailsea's local amenities and enjoying woodland views towards Tickenham Hill, Fleur de Lys has been meticulously updated throughout, creating a contemporary home ready to move straight into.



Key Features

- Fully renovated bungalow with modern finishes throughout
- Open-plan lounge, kitchen, and dining with bi-fold doors
- Three double bedrooms, including master with woodland views
- Private south-facing garden with porcelain patio
- Ample off-street parking including carport
- Sought-after location with woodland views of Tickenham Hill
- Shaker-style kitchen with granite worktops and Rangemaster cooker
- Contemporary fully tiled bathroom with bath and shower
- Insulated summer house/garden office with power supply
- Landscaped front and rear gardens with decking and lighting

GROUND FLOOR
1114 sq.ft. (103.5 sq.m.) approx.



TOTAL FLOOR AREA: 1114 sq.ft. (103.5 sq.m.) approx.

Whilst every attempt has been made to ensure the accuracy of the floorplan contained here, measurements of doors, windows, rooms and any other items are approximate and no responsibility is taken for any error, omission or mis-statement. This plan is for illustrative purposes only and should be used as such by any prospective purchaser. The services, systems and appliances shown have not been tested and no guarantee as to their operability or efficiency can be given.

Made with Metropix ©2025

