

## Brooklyn, Wrington

£475,000

🛏 4 🚿 1 🚿 1

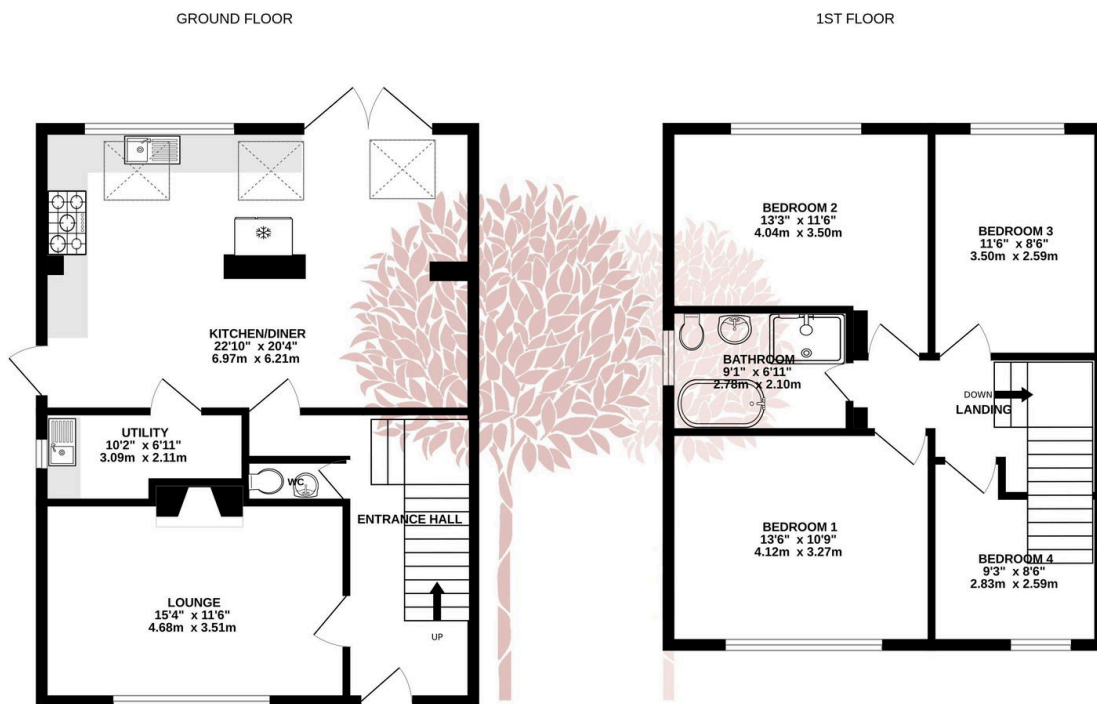


A beautifully presented four bedroom, semi-detached family home, in a popular and quiet cul de sac, close to the centre of the village and its many excellent amenities, primary school, and wonderful country walks.



## Key Features

- Well presented semi-detached family home
- Four bedrooms
- Separate sitting room with feature wood burning stove
- Single garage and ample off street parking
- Utility room and outside shed
- Excellent convenient position close to local amenities, school and fantastic countryside walks
- Beautifully appointed and extended kitchen/dining/family room
- Smart modern bathroom with three piece suite and walk in shower
- Delightful rear garden with a lovely south/westerly aspect



Whilst every attempt has been made to ensure the accuracy of the floorplan contained here, measurements of doors, windows, rooms and any other items are approximate and no responsibility is taken for any error, omission or mis-statement. This plan is for illustrative purposes only and should be used as such by any prospective purchaser. The services, systems and appliances shown have not been tested and no guarantee as to their operability or efficiency can be given.  
Made with Metropix ©2025

