

The Drive, Churchill

£550,000

🛏 4 🚿 2 🛋 2

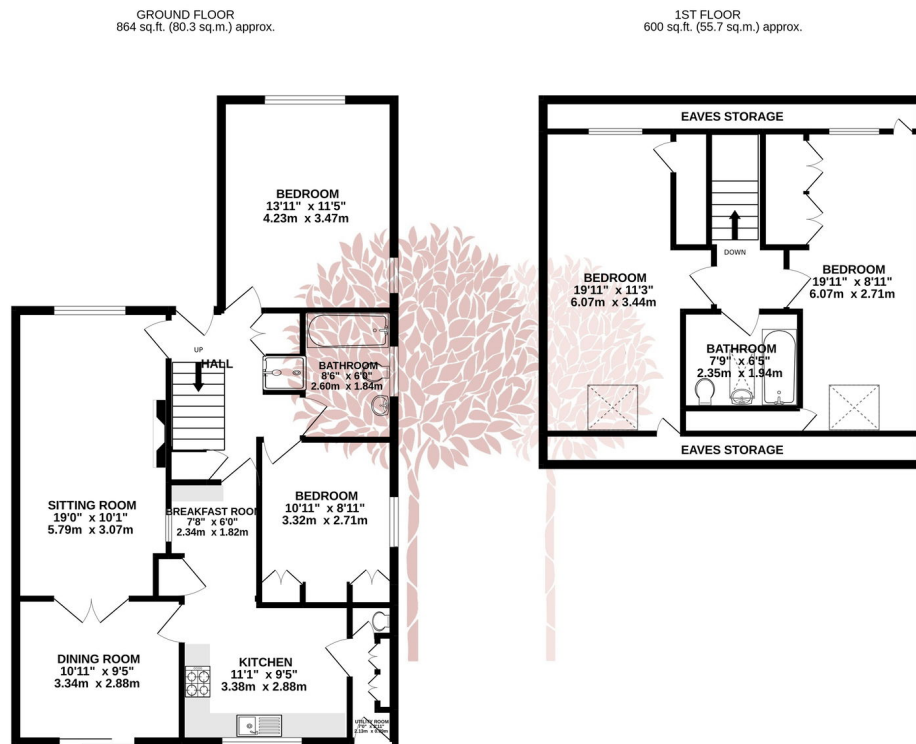


NO ONWARD CHAIN - A pretty, four-bedroom detached chalet style home situated at the foot of a quiet cul de sac in the desirable village of Churchill. EPC rating D.



Key Features

- Beautifully positioned detached bungalow
- Double garage and parking for 4/5 vehicles
- Sitting room and separate dining room
- Established landscaped garden with flower packed borders
- Four bedrooms and two well-appointed bathrooms
- Lovely central village location in Churchill
- Eat in kitchen with adjoining utility room
- No onward chain



Whilst every attempt has been made to ensure the accuracy of the floorplan contained here, measurements of doors, windows, rooms and any other items are approximate and no responsibility is taken for any error, omission or mis-statement. This plan is for illustrative purposes only and should be used as such by any prospective purchaser. The services, systems and appliances shown have not been tested and no guarantee as to their operability or efficiency can be given.
Made with Metropix ©2022

