

Wiltons, Wroughton

£495,000

🛏 4 🚿 1 🛋 3

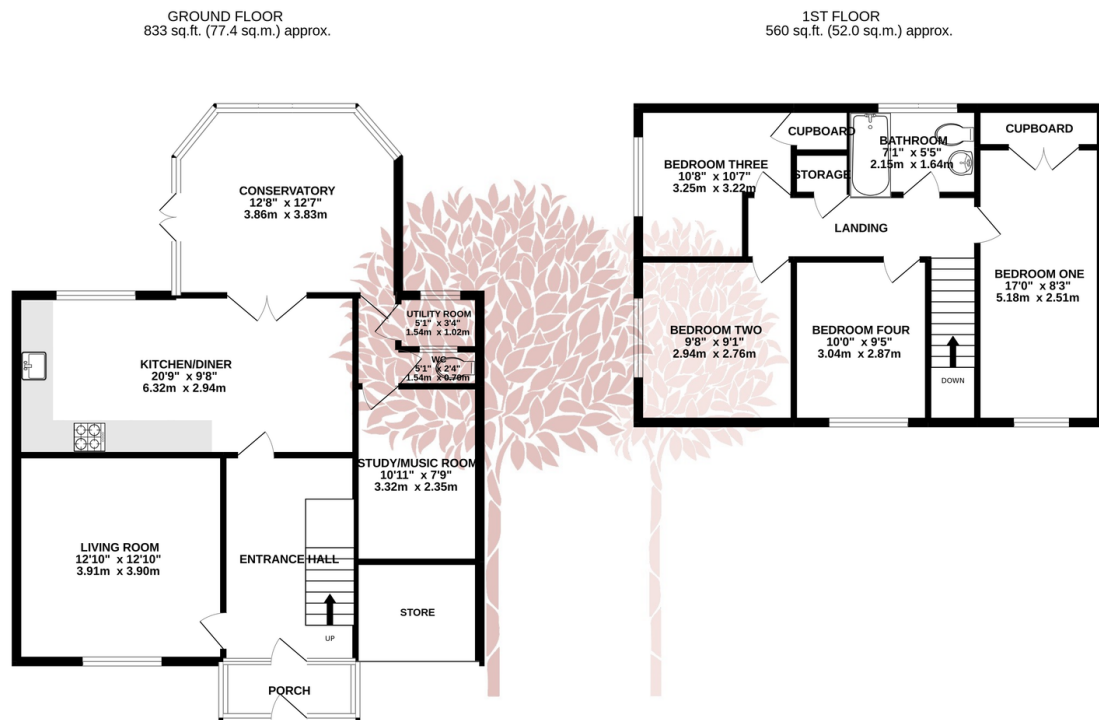


STYLISH - An extremely well-presented four double bedroom semi-detached family home in the 'Wiltons', a popular quiet cul de sac close to the many excellent amenities of the village. EPC rating D.



Key Features

- Beautifully presented semi-detached family home
- Four double bedrooms
- Fabulous kitchen/dining room with sleek grey units
- Conservatory and Music Room
- South facing garden, ample parking and part converted garage
- Desirable central village location
- Stylish contemporary interior
- Separate sitting room
- Stylish family bathroom and ground floor cloakroom



TOTAL FLOOR AREA: 1393 sq.ft. (129.5 sq.m.) approx.

Whilst every attempt has been made to ensure the accuracy of the floorplan contained here, measurements of doors, windows, rooms and any other items are approximate and no responsibility is taken for any error, omission or mis-statement. This plan is for illustrative purposes only and should be used as such by any prospective purchaser. The services, systems and appliances shown have not been tested and no guarantee as to their operability or efficiency can be given.

Made with Metropix ©2022

