

**7 Fieldfare Gardens ,**  
£310,000

🛏 2 🚿 2 🛋 1

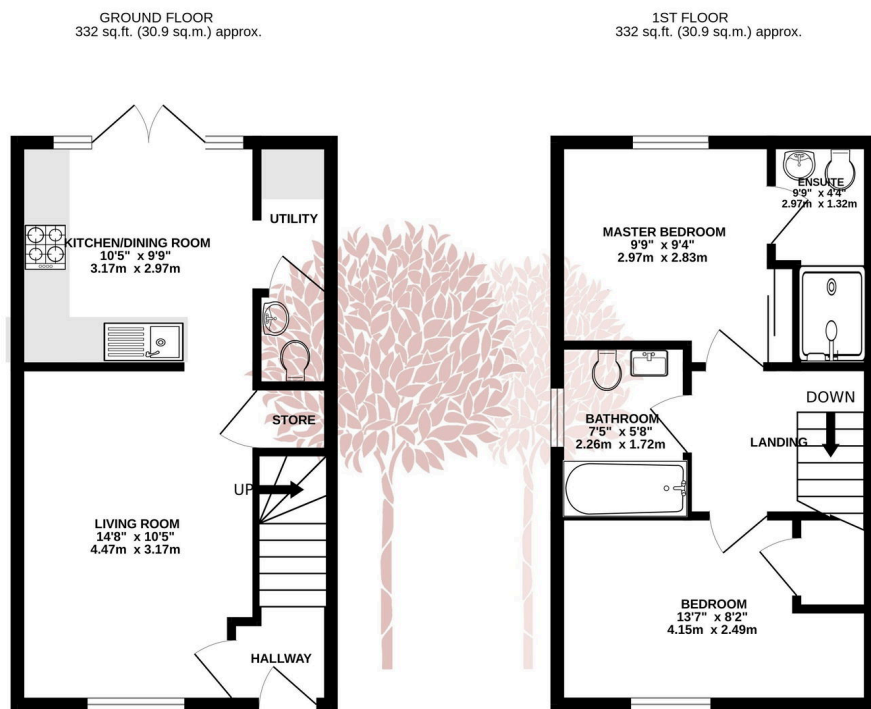


A delightfully positioned two bedroom semi-detached, modern home, occupying a lovely quiet position just seconds from footpaths and cycle lanes that connect to the historic Strawberry Line, from which you can enjoy miles of open countryside and wonderful scenic views . The property has a delightful south facing garden and two allocated parking spaces.



## Key Features

- Well presented two bedroom semi detached home
- Well presented accommodation throughout
- Delightful south facing garden with sun terrace and lawn
- Perfect first time purchase or downsize opportunity
- Lovely quiet position close to expansive countryside walks and cycle paths
- Two allocated off street parking spaces.
- Two well appointed bathrooms with ensuite to master bedroom
- A short distance to Chestnut Park primary school



TOTAL FLOOR AREA: 665 sq.ft. (61.7 sq.m.) approx.

Whilst every attempt has been made to ensure the accuracy of the floorplan contained here, measurements of doors, windows, rooms and any other items are approximate and no responsibility is taken for any error, omission or mis-statement. This plan is for illustrative purposes only and should be used as such by any prospective purchaser. The services, systems and appliances shown have not been tested and no guarantee as to their operability or efficiency can be given.

Made with Metropix ©2025

