

debbie fortune

ESTATE AGENTS

3 Bridge Farm Square, Congresbury

£430,000

🛏 3 🚿 1 🚗 1

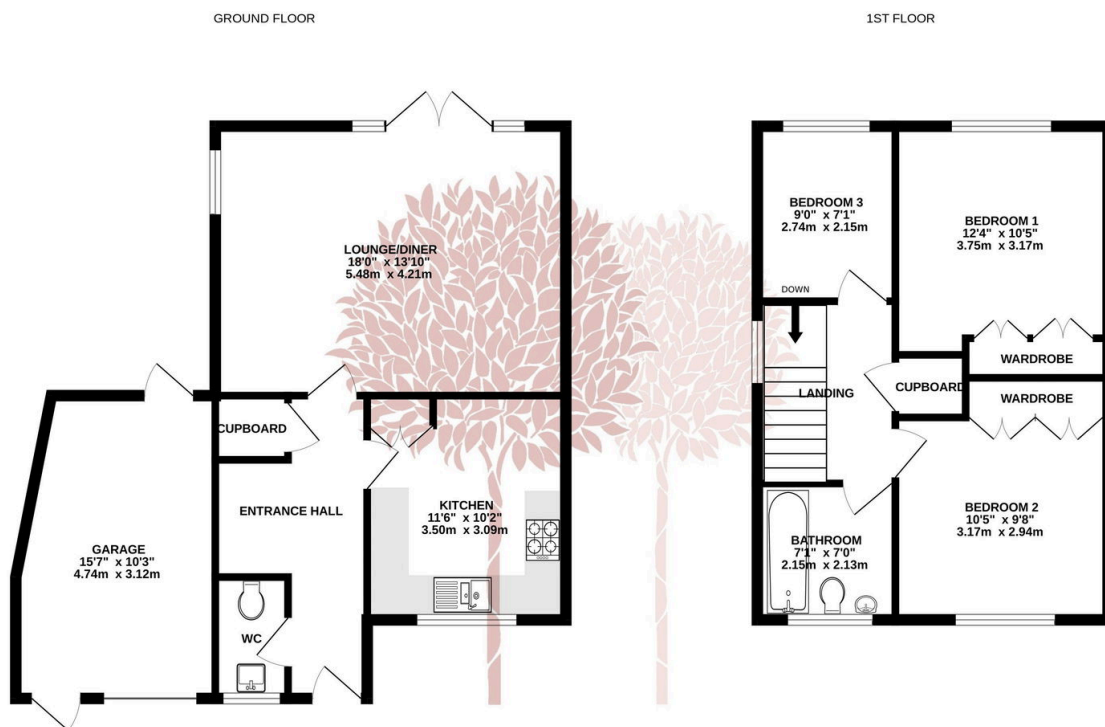


A smart and well presented three bedroom link-detached family home occupying a superb convenient village position backing onto the beautiful picturesque grounds of St Andrew's in Congresbury.



Key Features

- Well positioned three bedroom link-detached family house
- Off street parking and generous single garage
- Dual aspect sitting/dining room with French doors to the garden
- Smart family bathroom and convenient ground floor cloakroom
- EPC rating D
- Wonderful village position close to amenities and shops
- Pretty south/west facing garden backing onto picturesque church grounds
- Modern kitchen with space for a breakfast table
- No onward chain complications



TOTAL FLOOR AREA: 955sq.ft (88.7 sq.m.) approx.

Whilst every attempt has been made to ensure the accuracy of the floorplan contained here, measurements of doors, windows, rooms and any other items are approximate and no responsibility is taken for any error, omission or mis-statement. This plan is for illustrative purposes only and should be used as such by any prospective purchaser. The services, systems and appliances shown have not been tested and no guarantee as to their operability or efficiency can be given.

Made with Metropix 62025

