

Derham close, Yatton

£549,950

🛏 4 🍳 2 🛋 2

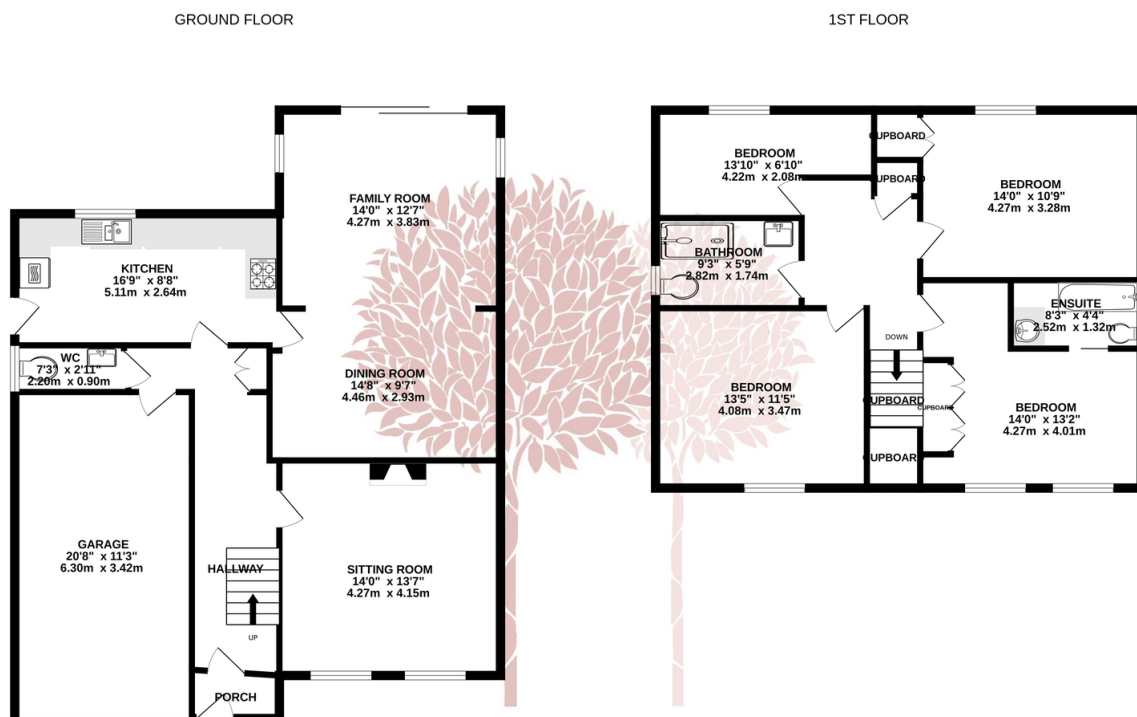


An extremely spacious four bedroom detached family home occupying a wonderful discrete position on a quiet cul de sac, close to amenities, shops and schools.



Key Features

- Spacious four bedroom detached modern home
- Generous off street parking plus integral single garage
- Two attractive reception rooms including sitting room and extended family/dining room
- Gas central heating and double glazing
- Mainline train station within a level walk
- Lovely peaceful location in the heart of the village
- Master bedroom with fitted wardrobes and en-suite bathroom
- Solar Panels
- Delightful rear garden with large lawn, attractively planted borders, greenhouse and shed
- Close to all the amenities of this popular village



Whilst every attempt has been made to ensure the accuracy of the floorplan contained here, measurements of doors, windows, rooms and any other items are approximate and no responsibility is taken for any error, omission or mis-statement. This plan is for illustrative purposes only and should be used as such by any prospective purchaser. The services, systems and appliances shown have not been tested and no guarantee as to their operability or efficiency can be given.
Made with Metropix 62025

