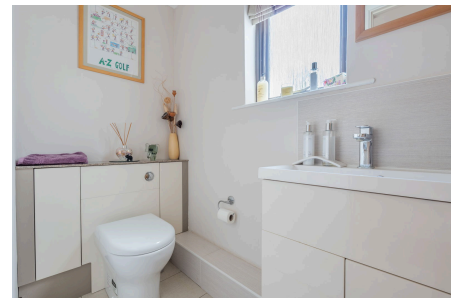


Bell Square, Blagdon

£950,000

🛏 4 🚿 3 🛋 3

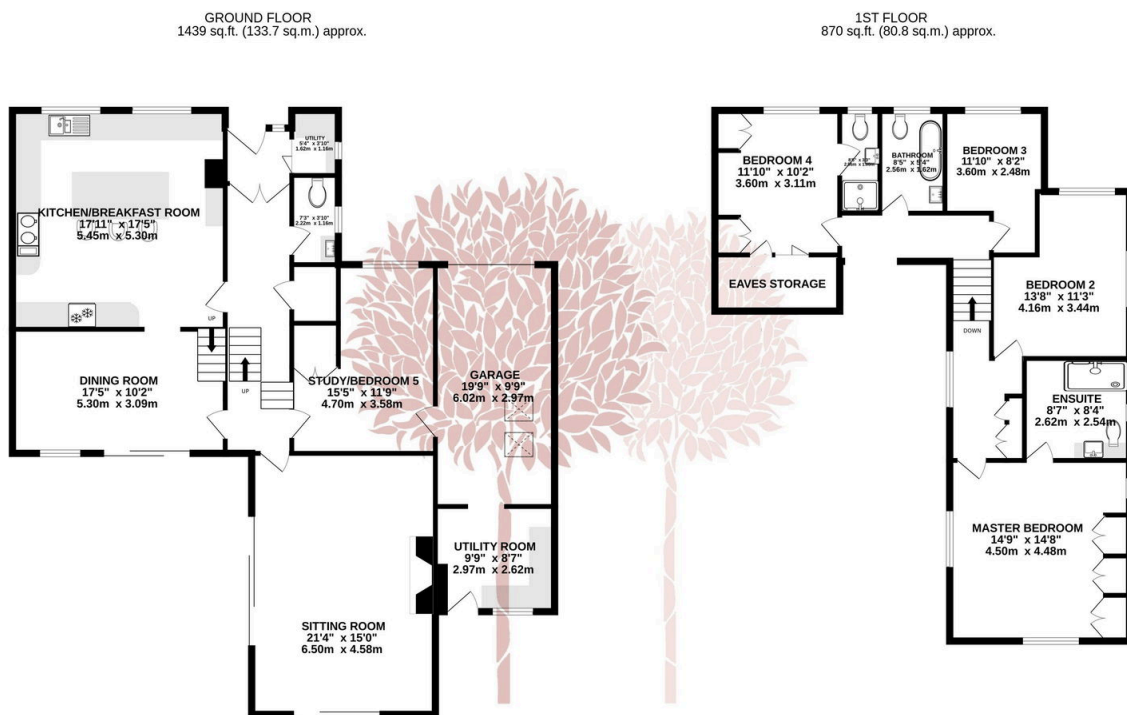


An exceptional modern detached home set in a superb peaceful location in the popular Mendip village of Blagdon. Beautifully appointed throughout the property offers stylish and versatile accommodation with as many as five bedrooms and two/three reception room. There is generous off street parking, a tandem garage with electric door, gorgeous south facing garden, stunning countryside views and no onward chain.



Key Features

- Stylish four/five bedroom detached modern home
- Much improved and remodelled in recent years
- Delightful south facing private garden with stunning sun terrace and beautiful lawn
- Three bathrooms including en-suites to both the principal and guest bedrooms
- Utility room, ground floor cloakroom and plenty of storage
- Idyllic location close to village amenities and yet just a stones throw from amazing countryside walks
- Generous off street parking and tandem garage
- Superb contemporary kitchen/breakfast room with AGA
- Gas central heating & double glazing
- No onward chain



TOTAL FLOOR AREA : 2309 sq.ft. (214.5 sq.m.) approx.

Whilst every attempt has been made to ensure the accuracy of the floorplan contained here, measurements of doors, windows, rooms and any other items are approximate and no responsibility is taken for any error, omission or mis-statement. This plan is for illustrative purposes only and should be used as such by any prospective purchaser. The services, systems and appliances shown have not been tested and no guarantee as to their operability or efficiency can be given.

Made with Metropix ©2025

