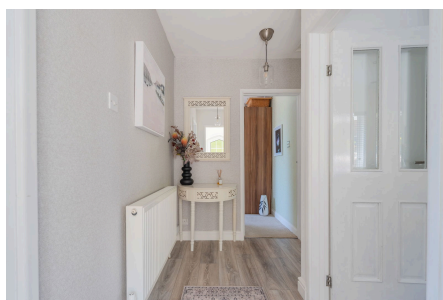


## Hillside West, Hutton

£395,000

🛏 2 🚿 1 🛋 1

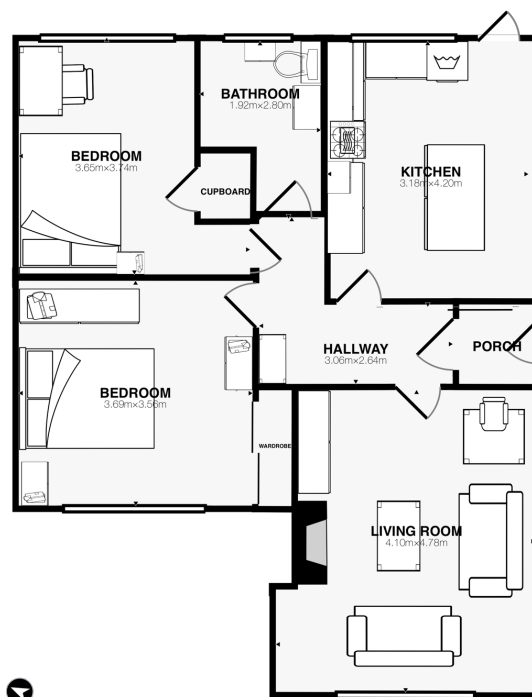


THIS BEAUTIFULLY PRESENTED BUNGALOW OFFERS STYLISH, COMFORTABLE LIVING IN A DESIRABLE VILLAGE LOCATION. Featuring two generously sized bedrooms, contemporary interiors, and breath-taking countryside views, this property combines peace, privacy, and practicality—perfect for downsizers, small families, or those seeking a tranquil retreat.



## Key Features

- Beautifully renovated throughout with neutral, stylish décor
- Long private driveway with ample off-road parking
- Wonderful countryside views
- EPC rating D
- Generous enclosed garden with sun-soaked aspect
- Detached garage and workshop/storage space
- Located in the sought-after village of Hutton
- Council Tax Band D



ENTRANCE FLOOR  
APPROX FLOOR AREA 69.4m<sup>2</sup>

Whilst every attempt has been made to ensure the accuracy of this floor plan, measurements of doors, windows, rooms and any other items are approximate and no responsibility is taken for any error, omission or mis-statement. This plan is for illustrative purposes only and should be used as such. The services, systems and appliances shown have not been tested and no guarantee as to their operability or efficiency can be given.

Floor plan created by RoomScan Pro LiDAR ©2022

