

## Dexter Way, Winscombe

Guide Price £550,000

🛏 4 🚿 2 🛋 2

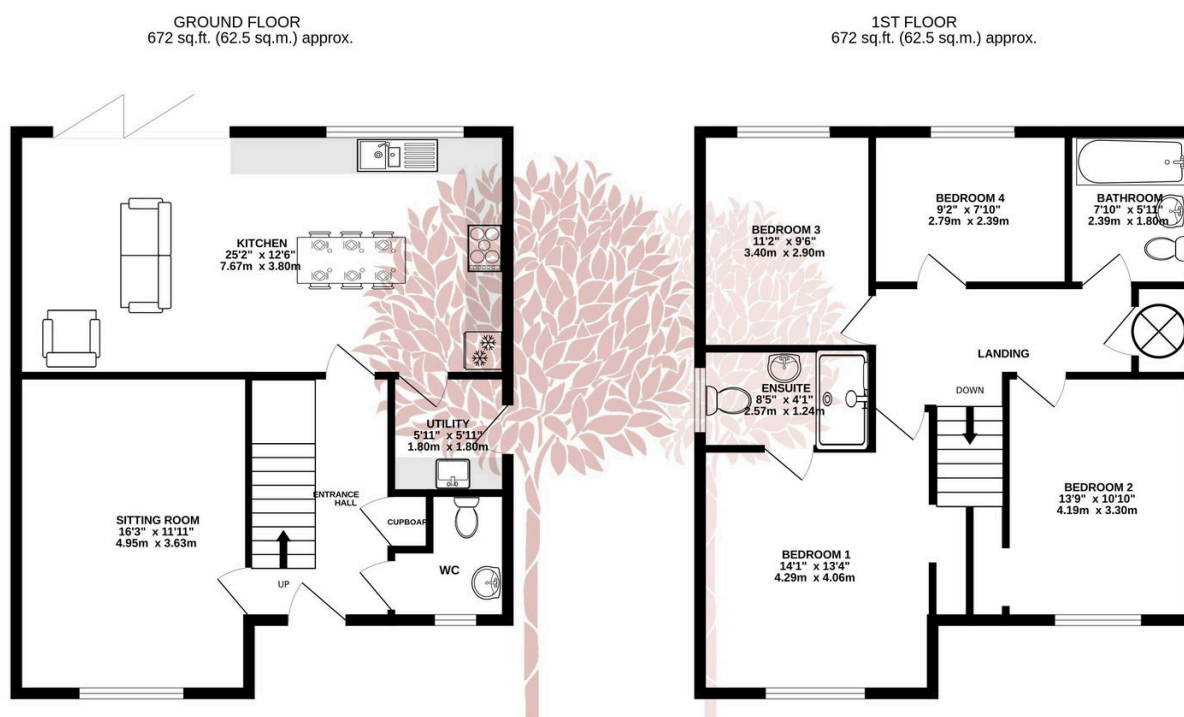


**INSTANT PERFECTION!** A beautifully finished, recently built home on one of the best plots in Woodborough Grange., with four double bedrooms and a fully landscaped garden.



## Key Features

- Four double bedrooms
- Family bathroom and ensuite
- Professionally landscaped garden
- Open plan kitchen/family room
- Utility room
- Council Tax Band F
- Gas central heating
- Large garage
- Off street parking
- EPC B



TOTAL FLOOR AREA: 1345 sq.ft. (124.9 sq.m.) approx.

Whilst every attempt has been made to ensure the accuracy of the floorplan contained here, measurements of doors, windows, rooms and any other items are approximate and no responsibility is taken for any error, omission or mis-statement. This plan is for illustrative purposes only and should be used as such by any prospective purchaser. The services, systems and appliances shown have not been tested and no guarantee as to their operability or efficiency can be given.

Made with Metropix ©2024

