

Coxs Green, Wroughton

£695,000

🛏 3 🚿 2 🛋 3

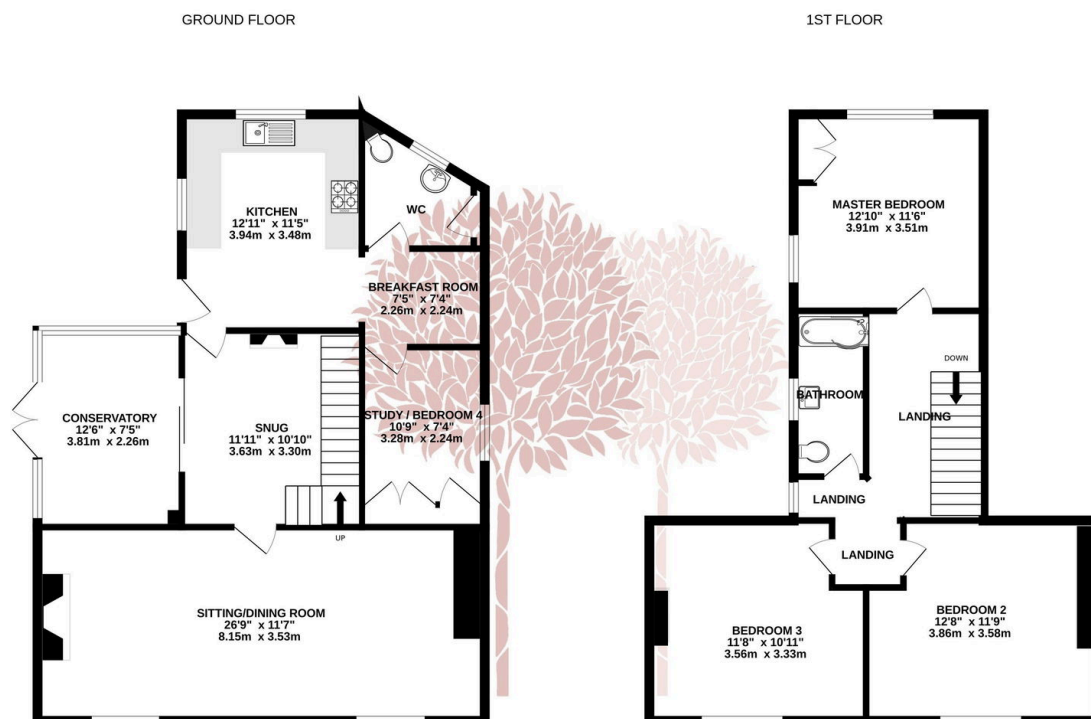


An idyllic wisteria clad 18th century detached cottage, set in a beautiful edge of village position, offering three double bedroom and three reception rooms with a delightful established garden and off street parking.



Key Features

- Beautiful three/four bedroom detached period cottage
- Well presented accommodation throughout
- Owned Solar Panels
- Planning for a two storey side extension visit North Somerset Planning and use Ref. No: 22/P/2607/FUH
- Wrington Primary School and Churchill Academy and 6th form catchment
- Lovely edge of village position in the desirable village of Wrington
- 26'7 sitting room, plus snug, office/ bedroom four and conservatory
- Off street parking
- Delightful flower packed garden with established fruit trees and stone outbuilding
- EPC rating pending



TOTAL FLOOR AREA: 1438sq.ft. (133.6 sq.m.) approx.

Whilst every attempt has been made to ensure the accuracy of the floorplan contained here, measurements of doors, windows, rooms and any other items are approximate and no responsibility is taken for any error, omission or mis-statement. This plan is for illustrative purposes only and should be used as such by any prospective purchaser. The services, systems and appliances shown have not been tested and no guarantee as to their operability or efficiency can be given.

Made with Metropix ©2025

