

## Moorland Street, Axbridge

£435,000

🛏 4 🚿 2 🛋 2



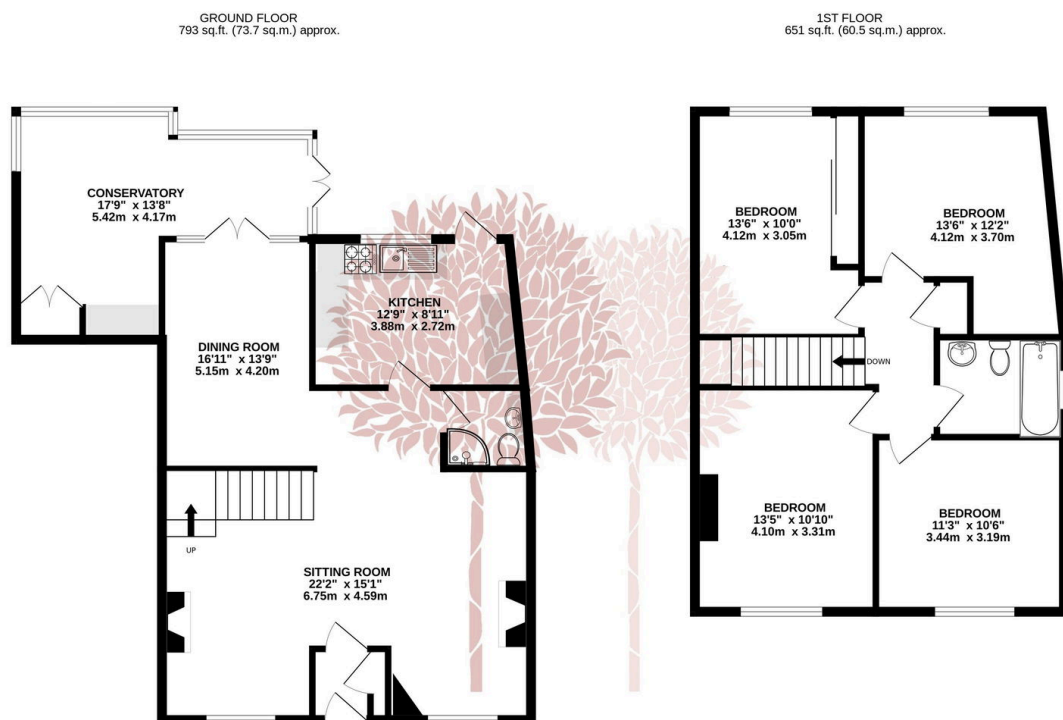
Discover this delightful four-bedroom character cottage, offering a unique blend of period charm, generous living space, and exceptional gardens - perfectly positioned in a sought-after location, a few steps from Axbridge town square.

This country cottage is deceptive in its accommodation and offers an absolutely stunning rear garden and easy access to the plethora of amenities that Axbridge offers.



## Key Features

- Potential to create a more open plan layout (subject to the necessary consents)
- Only a short stroll to the town centre
- Bright conservatory overlooking beautifully maintained gardens
- Charming four double bedroom character cottage in a desirable location
- EPC rating TBC
- Countryside walks nearby
- Stunning south-west facing gardens with mature trees, shrubs, patio and large shed
- Spacious sitting room with exposed stone walls and two fireplaces
- Gigaclear Ultrafast 500 broadband with smart WiFi installed
- Council tax band D



TOTAL FLOOR AREA: 1444 sq.ft. (134.1 sq.m.) approx.

Whilst every attempt has been made to ensure the accuracy of the floorplan contained here, measurements of doors, windows, rooms and any other items are approximate and no responsibility is taken for any error, omission or mis-statement. This plan is for illustrative purposes only and should be used as such by any prospective purchaser. The services, systems and appliances shown have not been tested and no guarantee as to their operability or efficiency can be given.

Made with Metropix ©2025

