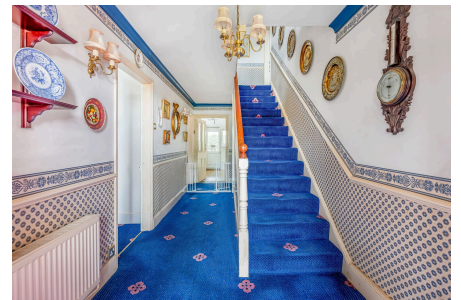


**Bridgwater Road, Barrow Gurney**

£750,000

🛏 4 🚿 1 🛋 3



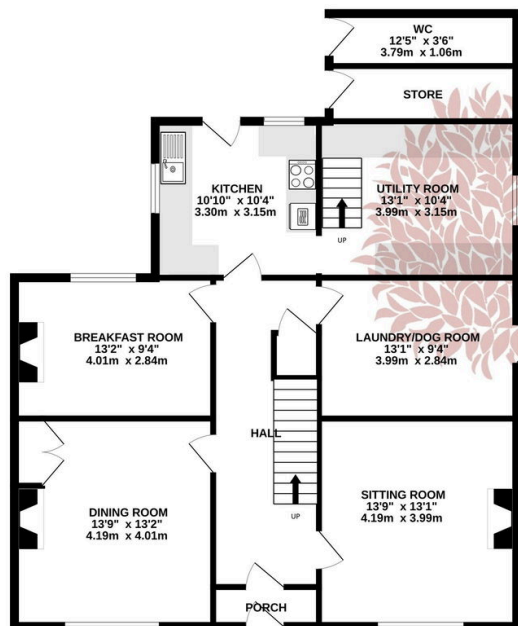
A beautiful stone faced 19th century former farmhouse, set in well-maintained grounds of approximately two acres, including a picturesque paddock, delightful orchard and formal gardens. There is generous secure off street parking, stunning rural views, numerous outbuildings including open field shelters/barns and huge potential to redevelop and improve the main house.



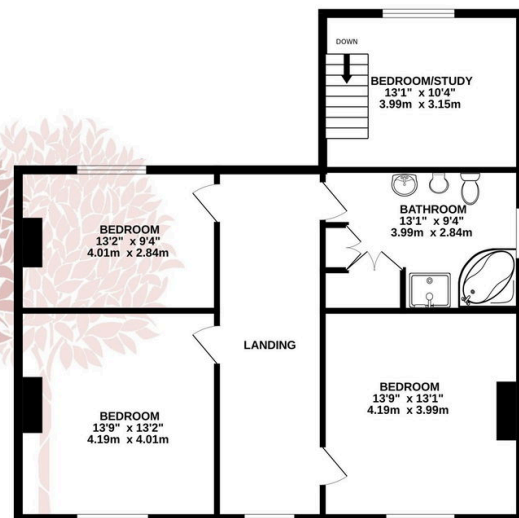
## Key Features

- EPC rating pending
- Council Tax Band G
- Outstanding potential
- Two green tractor sheds in the field
- Convenient position for commuting to the City of Bristol
- Host of original period features
- Off street parking for 6-8 vehicles
- Set in approximately 2 acres of grounds including two paddocks with outstanding rural views
- Beautiful three/four bedroom detached farmhouse
- Wonderful opportunity to modernise and create your own dream home

GROUND FLOOR  
1084 sq.ft. (100.7 sq.m.) approx.



1ST FLOOR  
889 sq.ft. (82.6 sq.m.) approx.



TOTAL FLOOR AREA : 1973 sq.ft. (183.3 sq.m.) approx.

Whilst every attempt has been made to ensure the accuracy of the floorplan contained here, measurements of doors, windows, rooms and any other items are approximate and no responsibility is taken for any error, omission or mis-statement. This plan is for illustrative purposes only and should be used as such by any prospective purchaser. The services, systems and appliances shown have not been tested and no guarantee as to their operability or efficiency can be given.

Made with Metropix 6/2025

