

49 Hawthorn Crescent, Yatton

£299,950

🛏 3 🚿 1 🛋 0

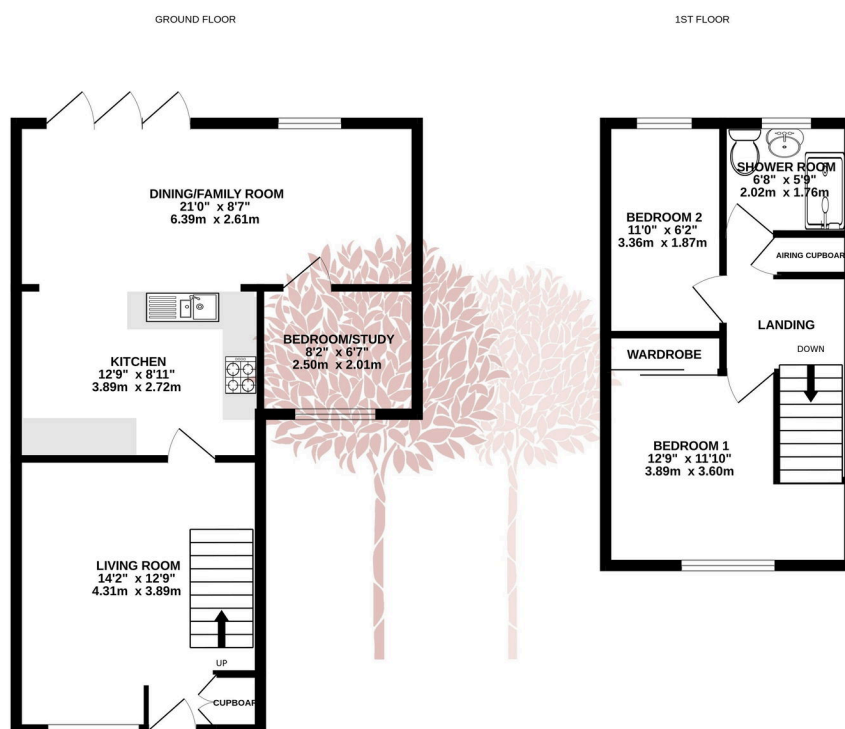


BEAUTIFULLY PRESENTED - This beautifully presented 2/3 bedroomed family home is perfectly positioned within the largest plot on the road. Having a stylish, recently fitted kitchen and a thoughtfully designed rear extension - perfect for modern family living or entertaining. With versatile living areas and scope for further customisation, this home is a rare find in a sought-after location, Debbie Fortune Estate Agents are delighted to bring such an attractive property to the market and very much look forward to showing you around.



Key Features

- Close to train station/local amenities
- Off street parking
- Beautifully renovated kitchen
- Enclosed rear garden
- Bifold doors out the back
- Light and airy accommodation
- Gas central heating
- EPC TBC
-
-



Whilst every attempt has been made to ensure the accuracy of the floorplan contained here, measurements of doors, windows, rooms and any other items are approximate and no responsibility is taken for any error, omission or misstatement. This plan is for illustrative purposes only and should be used as such by any prospective purchaser. The services, systems and appliances shown have not been tested and no guarantee as to their operability or efficiency can be given.
Made with Metropix ©2025

