

Warren View, Churchill

£615,000

🛏 5 🍳 3 🛋 2

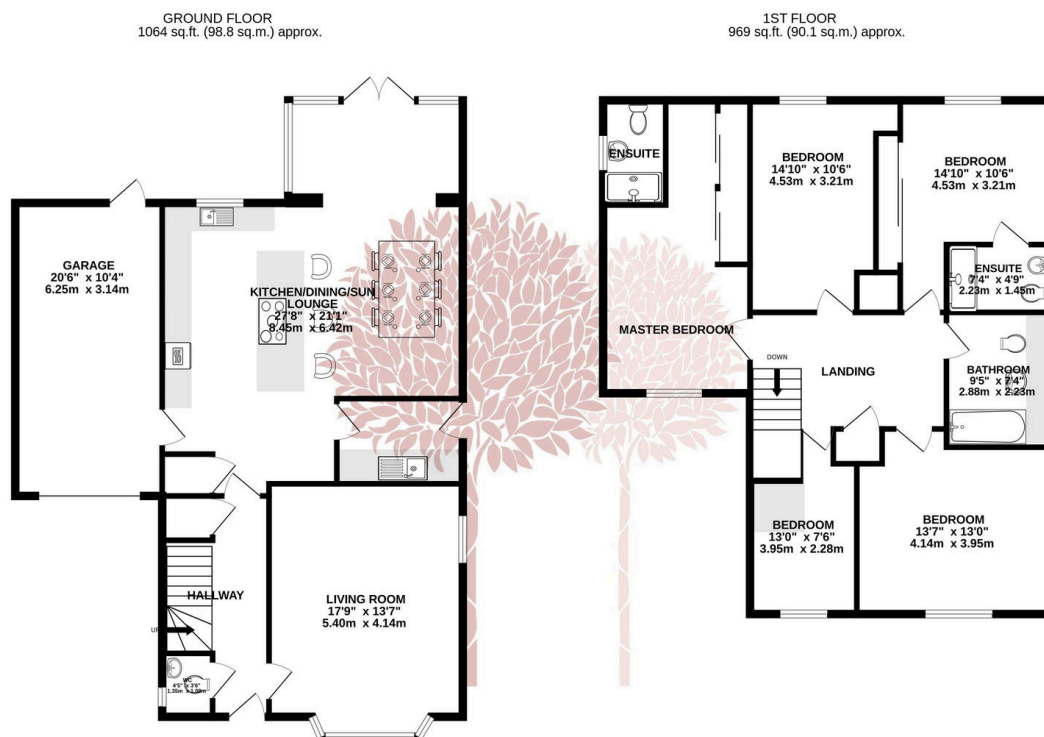


A rarely available, and beautifully presented, five bedroom detached family home occupying a delightful private position within the extremely popular Mendip Gate development, built in 2021 by Newland Homes, in the footsteps of the stunning Mendip Hills.



Key Features

- Beautifully presented five bedroom detached executive home
- Large single garage plus generous off street parking
- Three well appointed bathrooms (including two en-suite shower rooms) plus ground floor cloaks
- Separate utility room
- Remainder of a 10 year NHBC guarantee
- Superb open plan kitchen/dining/sun room plus a separate bay fronted sitting room
- Attractive south facing rear garden
- Double glazing/Gas central heating and owned Solar Panels
- Churchill Academy and 6th form catchment
- EPC rating B, Council Tax Band F



TOTAL FLOOR AREA: 2033 sq.ft. (188.9 sq.m.) approx.

Whilst every attempt has been made to ensure the accuracy of the floorplan contained here, measurements of doors, windows, rooms and any other items are approximate and no responsibility is taken for any error, omission or mis-statement. This plan is for illustrative purposes only and should be used as such by any prospective purchaser. The services, systems and appliances shown have not been tested and no guarantee as to their operability or efficiency can be given.
Made with Metropix ©2025

