

debbie fortune

ESTATE AGENTS

Wheatear Road, Yatton

£350,000

3 2 1

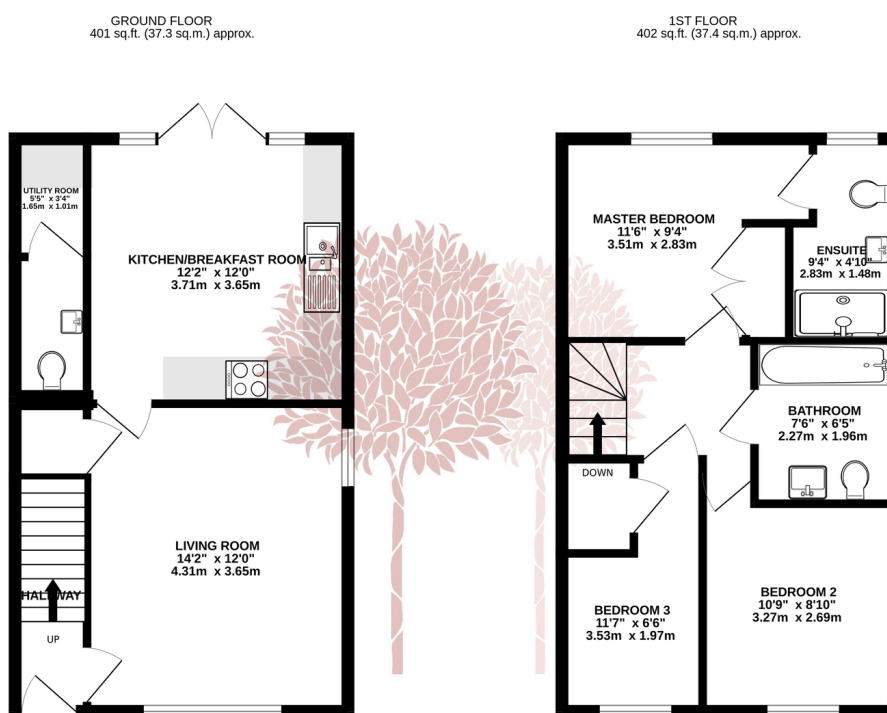


A delightful three bedroom semi-detached home situated in a superb convenient position close to local amenities, primary school, strawberry line foot and cycle path and Yatton Train station.



Key Features

- Three Bedroom Semi detached house
- Perfect first time buy or downsize purchase
- Beautifully presented throughout
- Enclosed, south facing rear garden
- Close to local amenities, schools and the Strawberry Line Footpath
- Garage and parking
- En-suite and family bathroom
-
-



TOTAL FLOOR AREA: 803 sq.ft. (74.6 sq.m.) approx.

Whilst every attempt has been made to ensure the accuracy of the floorplan contained here, measurements of doors, windows, rooms and any other items are approximate and no responsibility is taken for any error, omission or mis-statement. This plan is for illustrative purposes only and should be used as such by any prospective purchaser. The services, systems and appliances shown have not been tested and no guarantee as to their operability or efficiency can be given.

Made with Metropix ©2025

