

Hewish, Weston-Super-Mare

£795,000

🛏 5 🍷 3 🛋 3

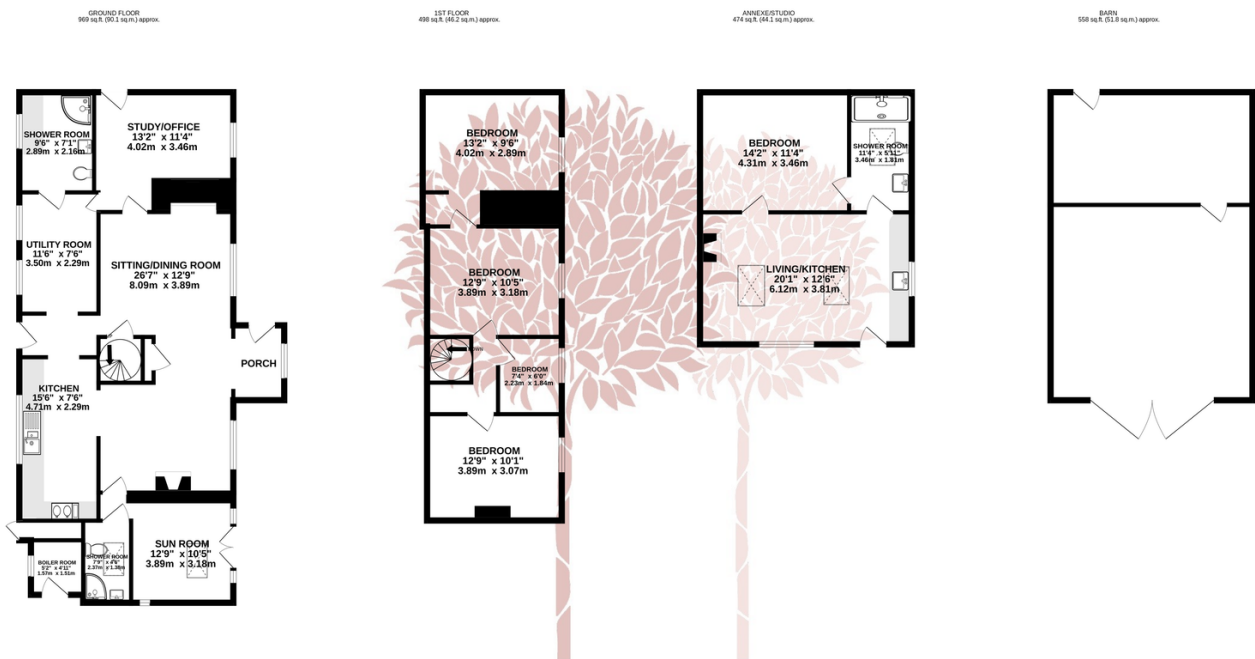


An enchanting four/five bedroom, 17th century farmhouse, with latter day additions, set in approximately an acre of beautiful scenic grounds, complete with a one bedroom studio/annexe, two shepherds huts, delightful garden with stone terraces, sweeping lawns and wonderful entertaining space, plus a large car barn and generous parking.



Key Features

- c17th century detached Farmhouse
- One bedroom stone annexe, plus two shepherd huts and a large car barn
- Two further reception rooms including home office and sun room
- Host of original period features
- EPC rating pending
- Set in just over an acre in a delightful semi-rural position
- Stunning 26'0 sitting/dining room with a beautiful inglenook fireplace and flagstone floors
- Well appointed kitchen with AGA
- Huge potential to provide an income or for co-habiting
- Council Tax Band E



TOTAL FLOOR AREA : 2500 sq.ft. (232.2 sq.m.) approx.

Whilst every attempt has been made to ensure the accuracy of the floorplan contained here, measurements of doors, windows, rooms and any other items are approximate and no responsibility is taken for any error, omission or mis-statement. This plan is for illustrative purposes only and should be used as such by any prospective purchaser. The services, systems and appliances shown have not been tested and no guarantee as to their operability or efficiency can be given.
Made with Metropix ©2025

