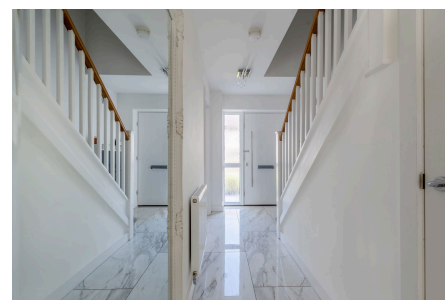
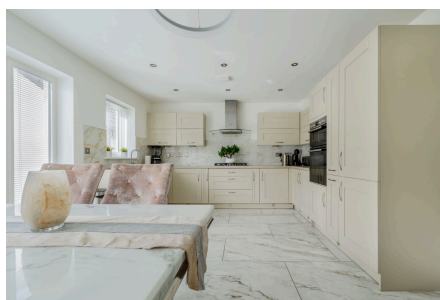
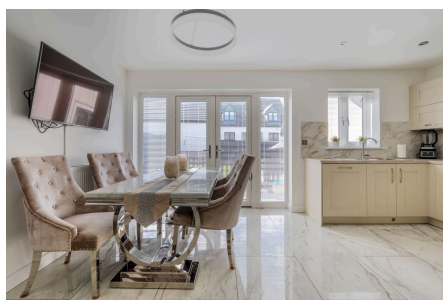


## Wentwood Drive, Bleadon

£450,000

 4  3  2



A superb three bedroom detached contemporary home, occupying a stunning hillside position within the acclaimed 'Keepers Gate' development in desirable Bleadon.

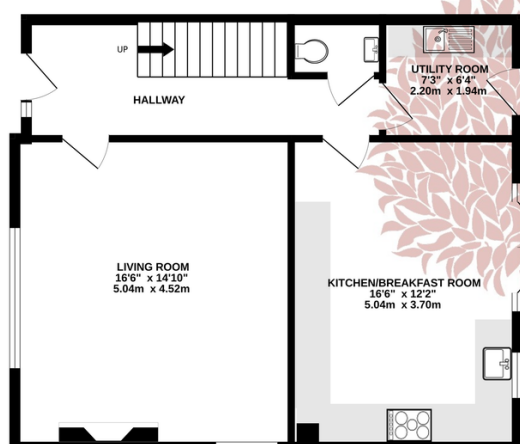
Much improved by the current owners, the property offers a sophisticated interior, generously proportioned rooms, enclosed gardens, generous parking, excellent eco-credentials and a converted large outdoor garden room/home office with en-suite.



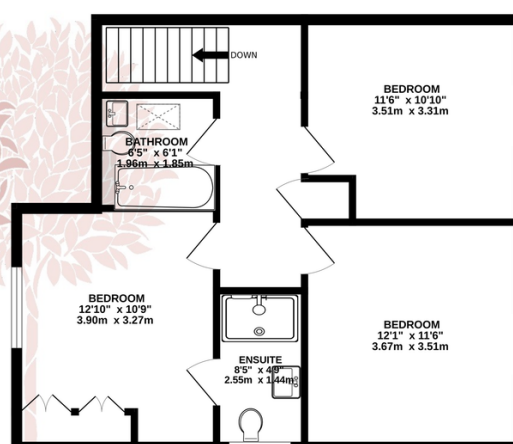
## Key Features

- 3 bedroom detached house
- Garden room with en-suite
- Bleadon village
- Immaculate condition
- En-suite to master bedroom
- Separate utility room
- 
- 

GROUND FLOOR  
607 sq.ft. (56.4 sq.m.) approx.



1ST FLOOR  
574 sq.ft. (53.3 sq.m.) approx.



TOTAL FLOOR AREA : 1180 sq.ft. (109.7 sq.m.) approx.

Whilst every attempt has been made to ensure the accuracy of the floorplan contained here, measurements of doors, windows, rooms and any other items are approximate and no responsibility is taken for any error, omission or mis-statement. This plan is for illustrative purposes only and should be used as such by any prospective purchaser. The services, systems and appliances shown have not been tested and no guarantee as to their operability or efficiency can be given.

Made with Metropix ©2025

