

Gooseham Mead, Congresbury

£600,000

 4  3  3



IMMACULATELY PRESENTED modern 'farmhouse style' detached house in convenient location in the popular village of Congresbury.

This impressive 4 bedroom detached house must be viewed internally in order to be fully appreciated. Offering spacious, well designed accommodation comprising 3 separate reception rooms; a charming sitting room, study, plus a cosy snug/dining room. 4 bedrooms, with 2 en-suites, and a family bathroom.

There are private, well established gardens and a double garage. All offered with **NO CHAIN**.



debbie fortune

ESTATE AGENTS

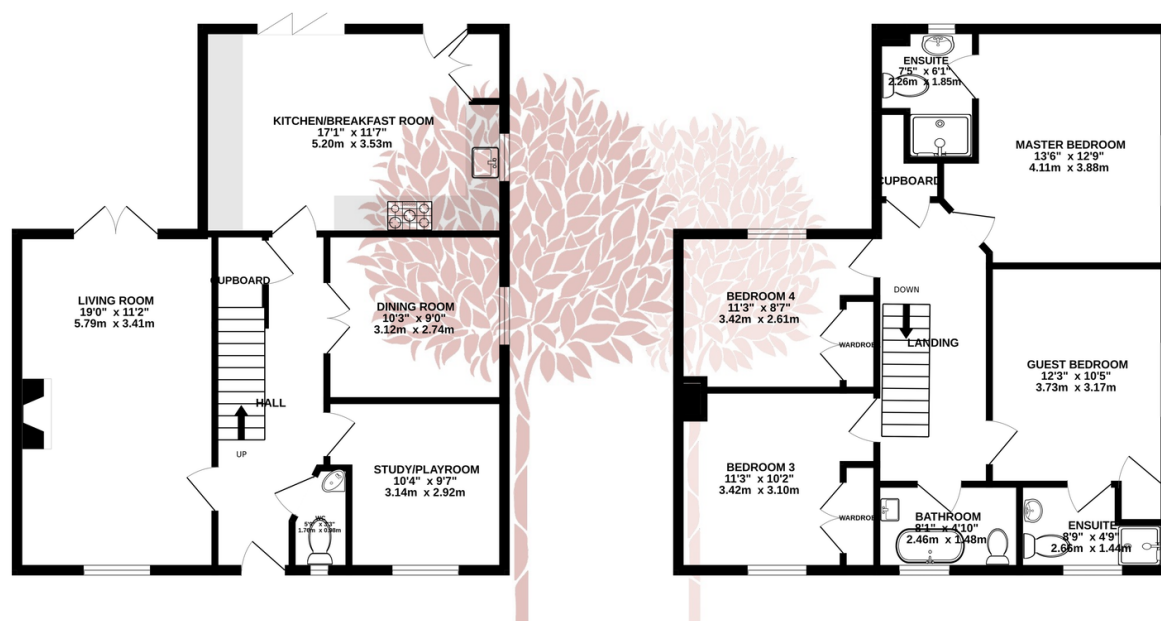


Key Features

- NO CHAIN
- 3 separate reception rooms
- Good sized gardens and double garage
- Family sized kitchen/breakfast room
- Four bedrooms (2 with en suite shower rooms)
- Detached 'farmhouse style' home
-
-

GROUND FLOOR

1ST FLOOR



141 SQ.M.

Whilst every attempt has been made to ensure the accuracy of the floorplan contained here, measurements of doors, windows, rooms and any other items are approximate and no responsibility is taken for any error, omission or mis-statement. This plan is for illustrative purposes only and should be used as such by any prospective purchaser. The services, systems and appliances shown have not been tested and no guarantee as to their operability or efficiency can be given.
Made with Metropix ©2025

