

Butham Lane, Chew Magna

£995,000

🛏 4 🍷 3 🛋 3



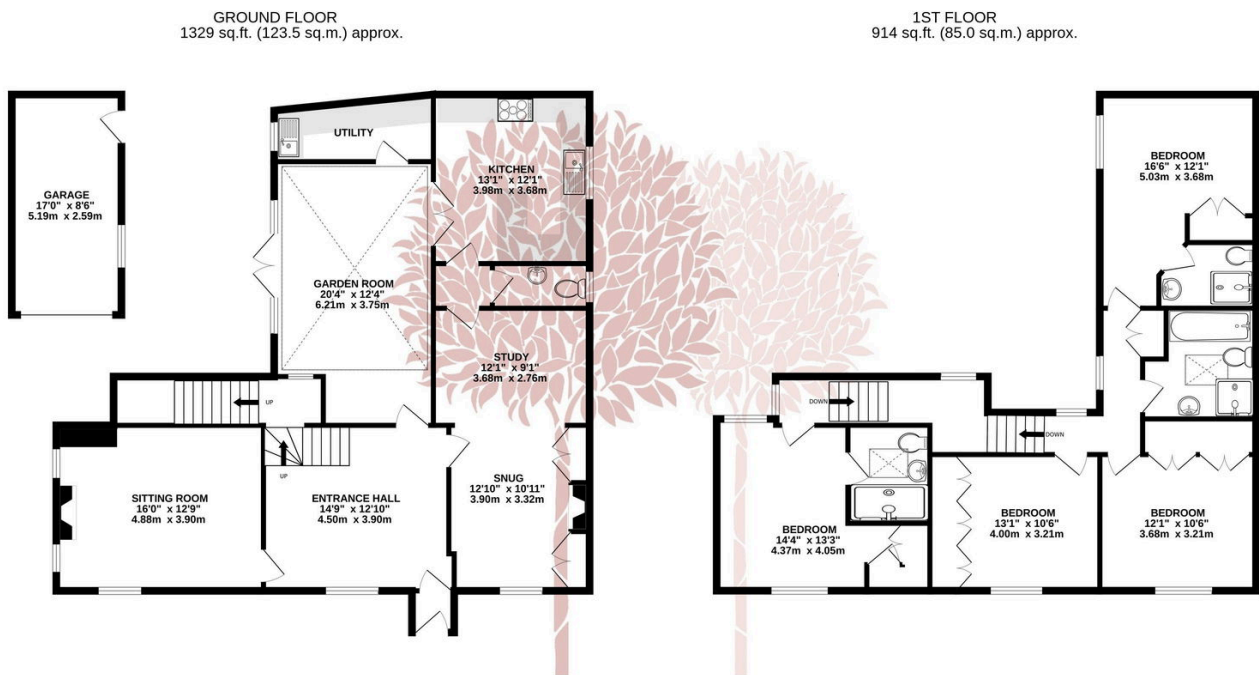
A simply stunning, period detached village home perfectly positioned in a peaceful backwater location yet within a short walk to the centre of the very sought after Chew Magna. The Chew Valley recently having been voted as the best place to live in The South West by The Times. This elegant family home offers ample accommodation, wrap around gardens, off street parking and a garage.

We are delighted to bring Bridge House to the market and very much look forward to showing you around, please don't hesitate in calling our Sales Team who would be delighted to arrange a viewing of this very special village house.



Key Features

- Character property in gorgeous gardens
- Stunning detached period property
- Two en-suites
- EPC rating D
- Council tax band G
- Sought after village location
- Four generous double bedrooms
- Off street parking for multiple vehicles
- We strongly recommend a viewing
- Three/Four reception rooms



TOTAL FLOOR AREA: 2243 sq.ft. (208.4 sq.m.) approx.

Whilst every attempt has been made to ensure the accuracy of the floorplan contained here, measurements of doors, windows, rooms and any other items are approximate and no responsibility is taken for any error, omission or mis-statement. This plan is for illustrative purposes only and should be used as such by any prospective purchaser. The services, systems and appliances shown have not been tested and no guarantee as to their operability or efficiency can be given.
Made with Metropix ©2025

