

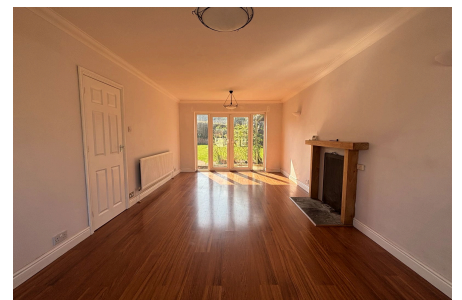
# debbie fortune

ESTATE AGENTS

## Claverham Road, Yatton

£415,000

🛏 3 🚿 2 🛋 1



A CHARMING THREE-BEDROOM SEMI-DETACHED HOUSE SET IN AN ELEVATED POSITION , OFFERING STUNNING COUNTRYSIDE VIEWS. Light and airy throughout, with a generous south-facing garden and good-sized bedrooms. Ample parking to the front makes this home perfect for family living and benefits being situated in a peaceful location. NO CHAIN.



## Key Features

- NO CHAIN
- Outstanding countryside views
- Countryside walks near by
- Public transport links
- Easy access to Bristol and Weston
- Stunning well proportioned south facing garden
- Off street parking
- Close to amenities
- School catchment areas
- EPC rating D, Council Tax Band D

