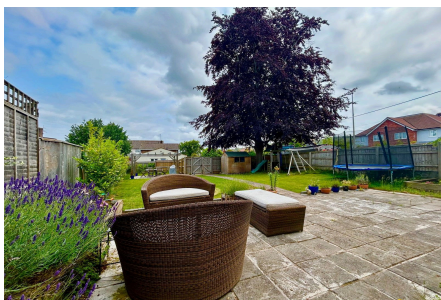


## West Town Road, Backwell

£550,000

🛏 5 🍳 2 🛋 2

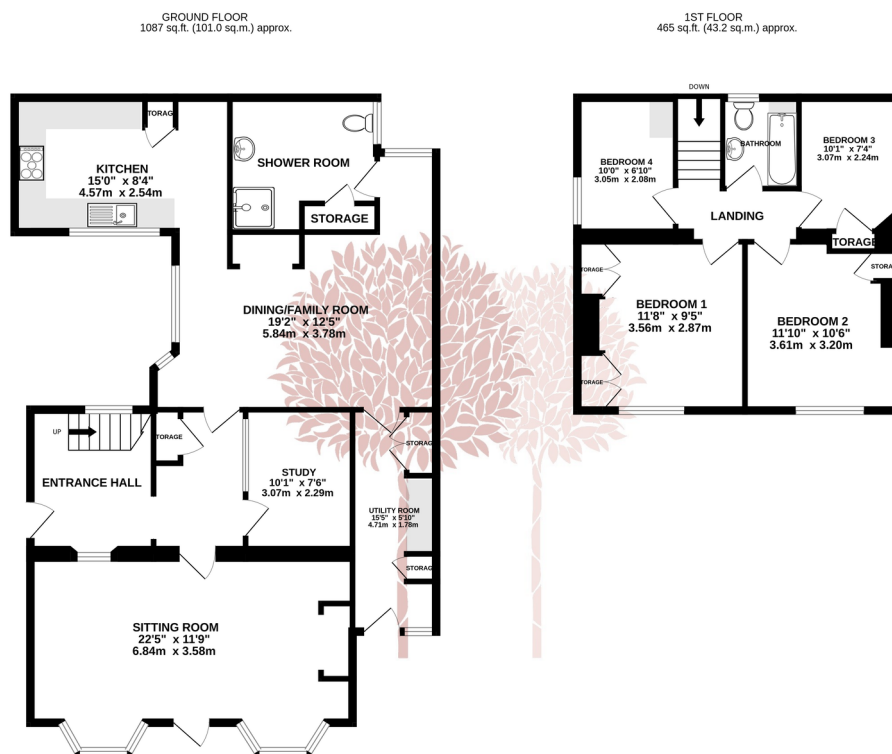


**DELIGHTFUL** - A four-bedroom detached period cottage with origins dating back to 1700, set in a convenient central village position with off street parking and a lovely, enclosed lawned garden. EPC rating E.



## Key Features

- New installed Log Burner
- Fantastic dining room with an impressive vaulted ceiling
- Two bathrooms including ground floor shower room and first floor bathroom
- Handy utility room
- Three separate reception rooms including a spacious bay fronted sitting room
- Four bedrooms and first floor bathroom
- Beautiful character features throughout
- Large lawned rear garden and pretty internal courtyard
- Two/Three off road parking spaces
- Enchanting 17th Century detached period cottage



TOTAL FLOOR AREA: 1552 sq.ft. (144.2 sq.m.) approx.

Whilst every attempt has been made to ensure the accuracy of the floorplan contained here, measurements of doors, windows, rooms and any other items are approximate and no responsibility is taken for any error, omission or mis-statement. This plan is for illustrative purposes only and should be used as such by any prospective purchaser. The services, systems and appliances shown have not been tested and no guarantee as to their operability or efficiency can be given.  
Made with Metropix ©2025

