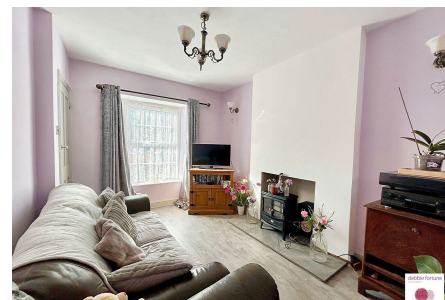


## North End Road, Yatton

£240,000

🛏 3 🚿 1 🚲 2

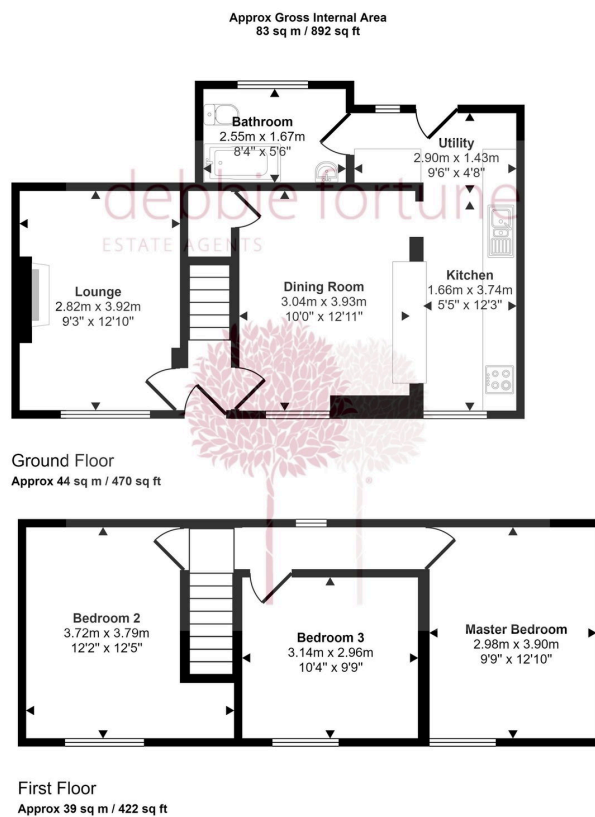


An attractive three bedroom end terrace cottage situated in a convenient position on North End Road, Yatton, just a stones throw from Yatton Train station, the Strawberry Line foot and cycle path and other local amenities.



## Key Features

- End of terrace period cottage
- Three double bedrooms
- Sitting room plus large kitchen/dining room
- Handy utility room and ground floor bathroom
- Some period features
- Close to Yatton Station and local amenities
- Gas central heating and double glazing
- Shared courtyard with area of private garden
- EPC rating E
- Council tax band C



This floorplan is only for illustrative purposes and is not to scale. Measurements of rooms, doors, windows, and any items are approximate and no responsibility is taken for any error, omission or mis-statement. Icons of items such as bathroom suites are representations only and may not look like the real items. Made with Made Snappy 360.

