

## Horsecastle Close, Yatton

£245,000

🛏 2 🚿 1 🚗 2

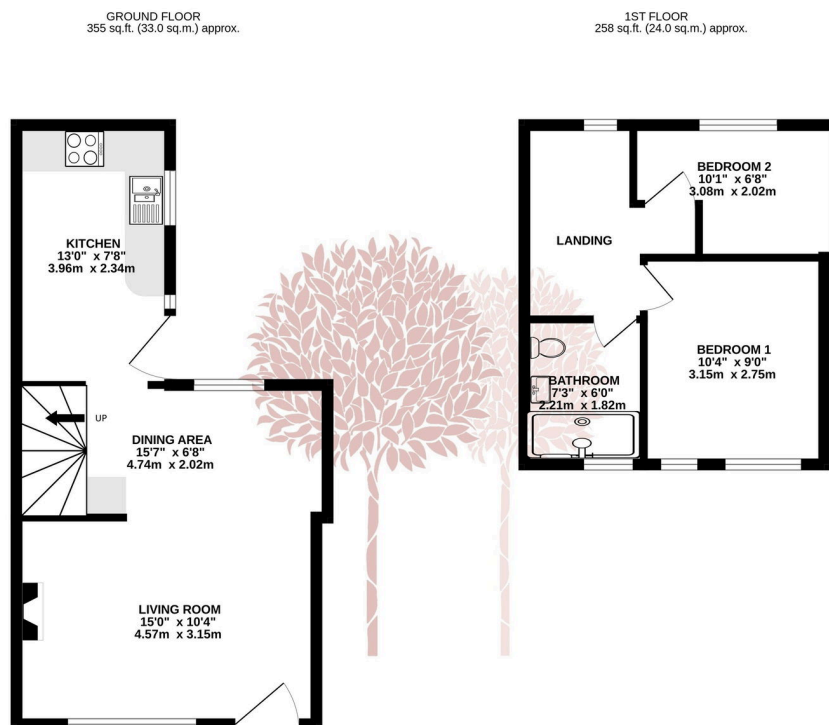


An attractive and beautifully presented end of terrace, period cottage, occupying a fantastic convenient position, close to local amenities, Yatton Train station and the Strawberry Line foot and cycle path. The property has two bedrooms, open plan living/dining room, recently installed modern kitchen and chic shower room. The property also has the advantage of a shared courtyard garden, handy lean to store which could be removed to provide off street parking if desired and no onward chain.



## Key Features

- Charming two bedroom end terrace period cottage
- Beautifully appointed throughout
- Delightful open plan living/dining room with feature fireplace and woodburning stove
- Double glazing and gas central heating
- EPC rating D
- Superb convenient position for local amenities, schools and Yatton Railway station
- Lean to store to the side offering potential off street parking
- Fantastic modern kitchen with soft grey units and stable door
- No onward chain complications
- Council Tax Band B



TOTAL FLOOR AREA - 613 sq.ft. (56.9 sq.m.) approx.

Whilst every attempt has been made to ensure the accuracy of the floorplan contained here, measurements of doors, windows, rooms and any other items are approximate and no responsibility is taken for any error, omission or mis-statement. This plan is for illustrative purposes only and should be used as such by any prospective purchaser. The services, systems and appliances shown have not been tested and no guarantee is given as to their operability or efficiency can be given.  
Made with Metropix ©2024

