

Dairy Close, Yatton

£399,950

🛏️ 4 🚿 2 🛋️ 2

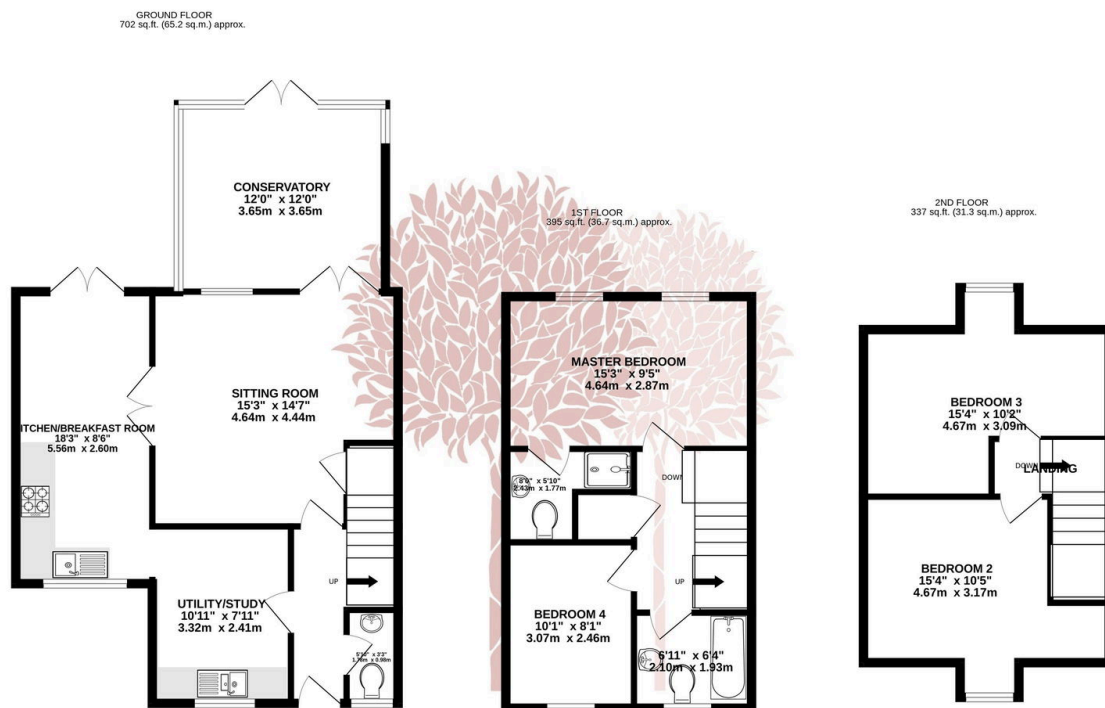


A well-presented semi detached town house offering extended living accommodation, private rear garden and off street parking.



Key Features

- Four bedroom semi-detached town house
- Extended living accommodation on the ground floor
- Private rear garden
- Off street parking
- Short walk to Yatton train station
- Well-proportioned bedrooms
- Situated in a small cul-de-sac
- EPC Rating C
- Council Tax Band D
- Backwell School catchment



TOTAL FLOOR AREA: 1433 sq.ft. (133.2 sq.m.) approx.

Whilst every attempt has been made to ensure the accuracy of the floorplan contained here, measurements of doors, windows, rooms and any other items are approximate and no responsibility is taken for any error, omission or mis-statement. This plan is for illustrative purposes only and should be used as such by any prospective purchaser. The services, systems and appliances shown have not been tested and no guarantee as to their operability or efficiency can be given.

Made with Metropix ©2024

