



Smallway, Congresbury

£695,000

 4  2  3



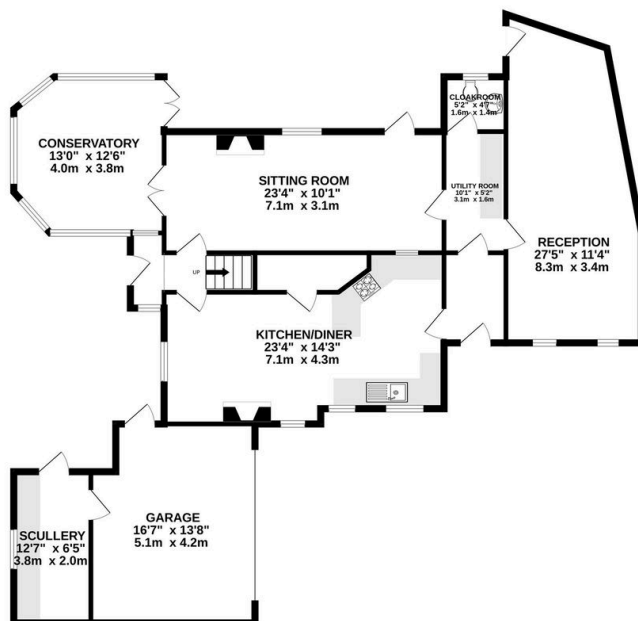
An elegant detached, period home, situated on the fringes of the popular village of Congresbury. Beautifully presented throughout the property offers versatile accommodation with as many as four bedrooms, excellent work from home space, a beautiful garden and the potential of no onward chain.



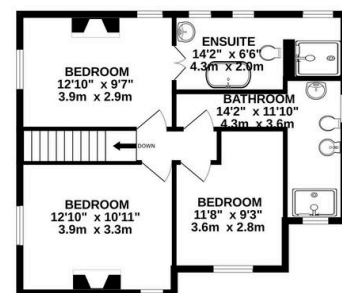
Key Features

- Beautifully presented throughout with lovely period features and attractive decoration
- Two bathrooms plus ground floor cloakroom
- Lovely traditional dual aspect kitchen/breakfast room
- Lovely south/west facing garden with gorgeous decked veranda
- EPC rating pending
- Handy utility room, plus separate scullery, and an oversized single garage
- Sitting/dining room, plus Conservatory and large 27' office/reception room
- Three principal bedrooms with a potential fourth ground floor bedroom
- Charming detached period cottage in lovely edge of village position
- Council Tax Band F

GROUND FLOOR
1395 sq.ft. (129.6 sq.m.) approx.



1ST FLOOR
564 sq.ft. (52.4 sq.m.) approx.



TOTAL FLOOR AREA: 1959 sq.ft. (182.0 sq.m.) approx.

Whilst every attempt has been made to ensure the accuracy of the floorplan contained here, measurements of doors, windows, rooms and any other items are approximate and no responsibility is taken for any error, omission or mis-statement. This plan is for illustrative purposes only and should be used as such by any prospective purchaser. The services, systems and appliances shown have not been tested and no guarantee as to their operability or efficiency can be given.

Made with Metropix ©2024

