

debbie fortune

ESTATE AGENTS

Kingsmead, Nailsea

£535,000

🛏️ 4 🍽️ 2 🛋️ 2

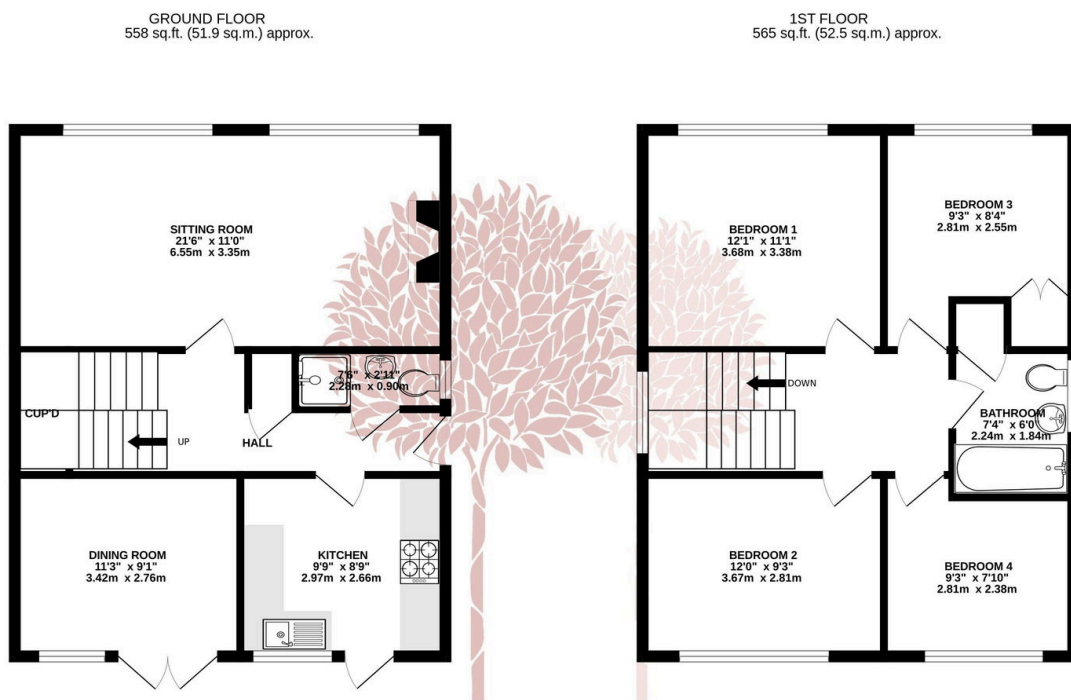


A detached family home situated in a peaceful location with a superb large garden, off street parking and garage.



Key Features

- Four bedroom detached family home
- Large, well-stocked rear garden
- Immaculate interior
- Viewings Advised
- Sought After Location
- Situated on a peaceful cul-de-sac
- Off street parking and garage
- Countryside walks nearby
- Energy Performance Rating Pending
- Potential to Extend (subject to planning)



KINGSMEAD

TOTAL FLOOR AREA: 1123 sq.ft. (104.3 sq.m.) approx.

Whilst every attempt has been made to ensure the accuracy of the floorplan contained here, measurements of doors, windows, rooms and any other items are approximate and no responsibility is taken for any error, omission or mis-statement. This plan is for illustrative purposes only and should be used as such by any prospective purchaser. The services, systems and appliances shown have not been tested and no guarantee as to their operability or efficiency can be given.
Made with Metropix ©2024

