



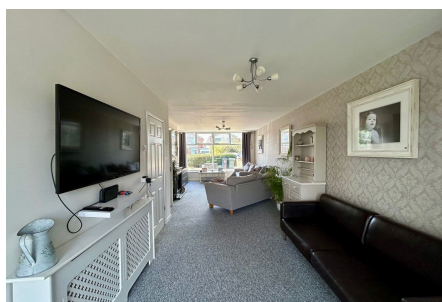
# debbie fortune

ESTATE AGENTS

## Park Road, Congresbury

£385,000

 3  2  2

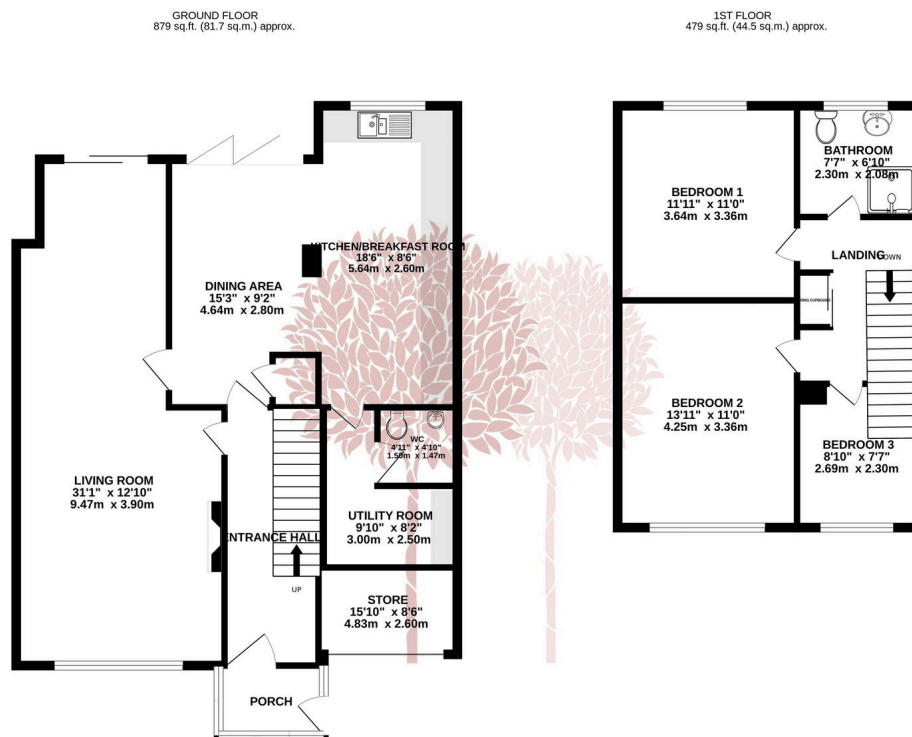


A super, light and airy three bedroom semi detached home occupying a lovely position backing onto open fields, within easy reach of the many excellent local amenities, including the village primary school, shopping precinct, playing fields and amazing countryside walks.



## Key Features

- Light and airy semi-detached family home
- Backing onto open fields
- 31'0 living/family room
- Superb position close to local amenities, green space, and countryside walks
- Superb modern kitchen/dining room
- Utility room and ground floor cloakroom
- Attractive enclosed rear garden
- Gas central heating & Double glazing
- New roof and tiles
- Council Tax Band D, EPC rating C



TOTAL FLOOR AREA: 1358 sq.ft. (126.2 sq.m.) approx.

Whilst every attempt has been made to ensure the accuracy of the floorplan contained here, measurements of doors, windows, rooms and any other items are approximate and no responsibility is taken for any omission or mis-statement. This plan is for illustrative purposes only and should be used as such by any prospective purchaser. The services, systems and appliances shown have not been tested and no guarantee as to their operability or efficiency can be given.

Made with Metropix ©2024

