

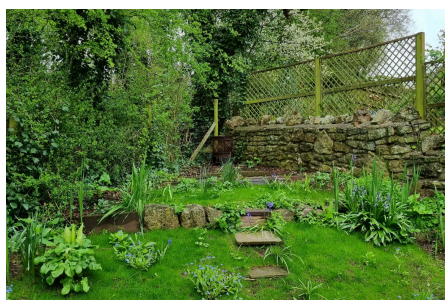
# debbie fortune

ESTATE AGENTS

## Williams Yard, Winford

Guide Price £350,000

🛏 2 🚿 1 🚺 1

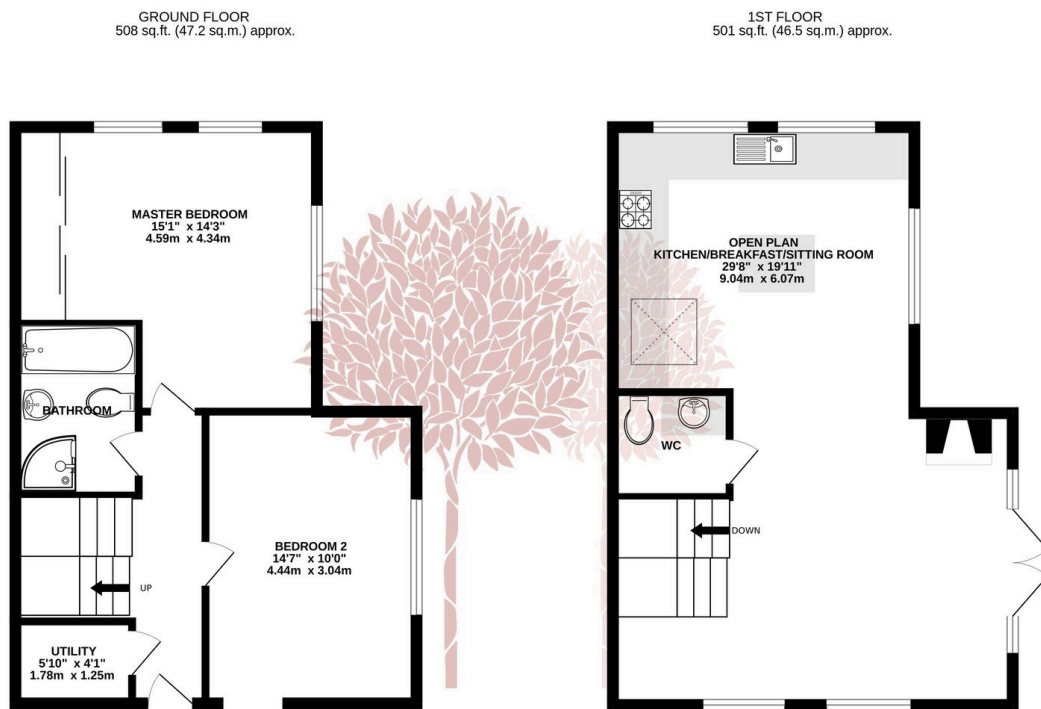


**TRULY UNIQUE TREE TOP LIVING** - This two bedroom home is in the sought after eco-development of Williams Yard in Winford and offers a spacious home, both inside and out!



## Key Features

- Two bedroom stone dressed eco home
- Open plan kitchen living room
- Terrace overlooking the garden
- Two large double bedrooms
- Four piece bathroom plus separate cloakroom
- Utility space and solar panels
- Corner plot with a country style garden
- Chew Valley school catchment
- Council Tax band D
- EPC rating C



TOTAL FLOOR AREA : 1009 sq.ft. (93.7 sq.m.) approx.

Whilst every attempt has been made to ensure the accuracy of the floorplan contained here, measurements of doors, windows, rooms and any other items are approximate and no responsibility is taken for any error, omission or mis-statement. This plan is for illustrative purposes only and should be used as such by any prospective purchaser. The services, systems and appliances shown have not been tested and no guarantee as to their operability or efficiency can be given.  
Made with Metropix ©2023

