

Wrington Hill, Wrington

Guide Price £750,000

🛏 4 🍳 2 🚿 1



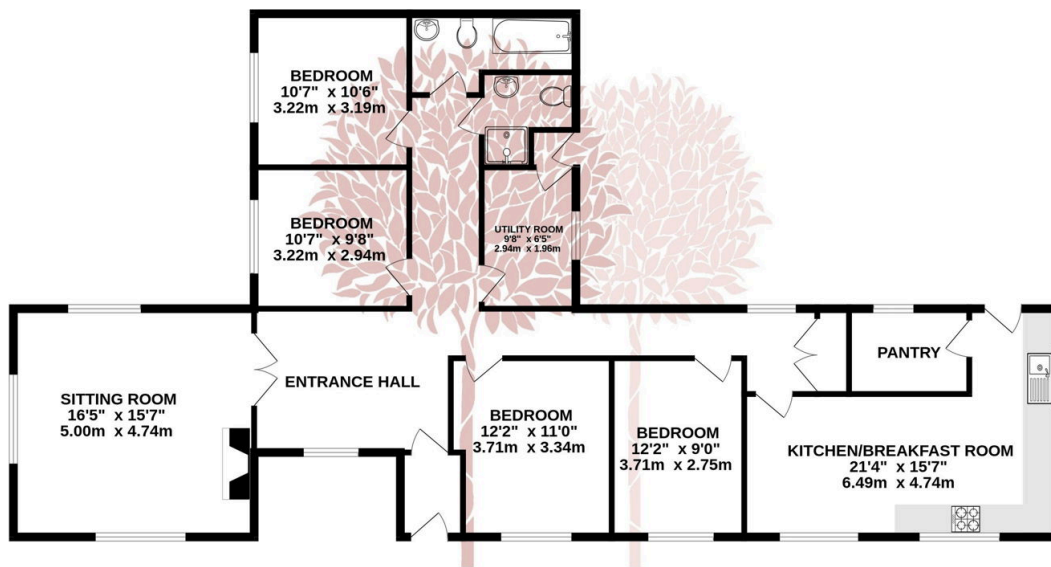
AN EXCEPTIONALLY PRETTY PLOT - In a fantastic location on Wrington Hill, this four bedroom bungalow offers a superb family home with a huge amount of future potential!



Key Features

- Four double bedrooms
- Two bathrooms
- Kitchen/diner with walk in pantry
- Large sitting room with feature fireplace
- Wrap around gardens
- Small paddock
- Detached garage
- Large driveway with parking for several cars
- Huge scope to extend (subject to planning)
- EPC Rating E

GROUND FLOOR 1480 sq.ft. (137.5 sq.m.) approx.



TOTAL FLOOR AREA: 1480 sq.ft. (137.5 sq.m.) approx.

Whilst every attempt has been made to ensure the accuracy of the floorplan contained here, measurements of doors, windows, rooms and any other items are approximate and no responsibility is taken for any error, omission or mis-statement. This plan is for illustrative purposes only and should be used as such by any prospective purchaser. The services, systems and appliances shown have not been tested and no guarantee as to their operability or efficiency can be given.

Made with Metropix ©2024

