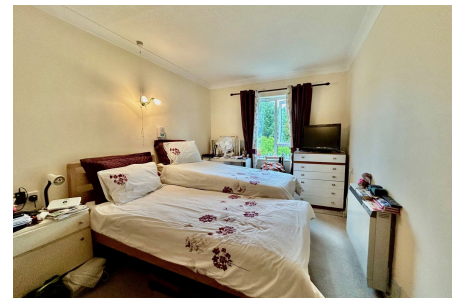
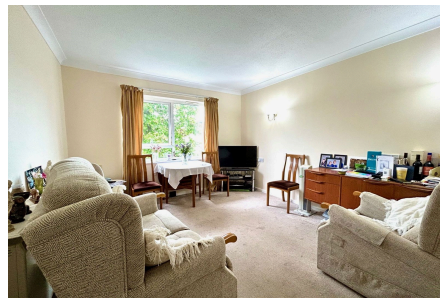


School Road, Wroughton

£125,000

🛏 2 🚿 1 🚗 1



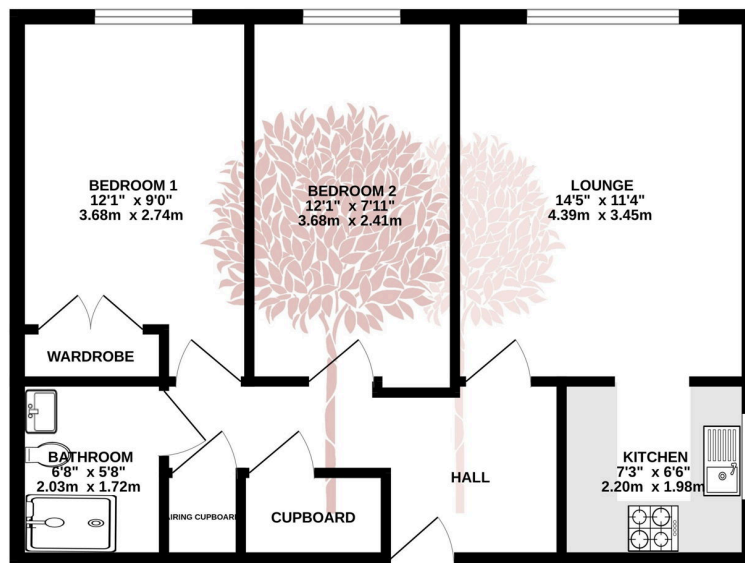
A two bedroom apartment occupying a lovely corner position at the Lodge in Wroughton. Reserved specifically for those over 55 years of age, the lodge features a communal lounge, allocated and visitors parking and use a communal laundry room. Apartment 21 enjoys a lovely southerly aspect with views towards the Mendip Hills.



Key Features

- Purpose built apartment for the over 55's
- Recently modernised kitchen and shower room
- Communal parking & well maintained communal gardens
- Short distance from the excellent local amenities in the village
- Two bedrooms
- Fantastic outlook over the village towards the Mendip Hills
- Lift/Laundry room and communal lounge

GROUND FLOOR



TOTAL FLOOR AREA: 614sq. ft. (57.0 sq.m.) approx.

Whilst every attempt has been made to ensure the accuracy of the floorplan contained here, measurements of doors, windows, rooms and any other items are approximate and no responsibility is taken for any error, omission or misstatement. This plan is for illustrative purposes only and should be used as such by any prospective purchaser. The services, systems and appliances shown have not been tested and no guarantee as to their operability or efficiency can be given.

Made with Metropix ©2024

