




North Widcombe, West Harptree

Guide Price £915,000

 3  2  2



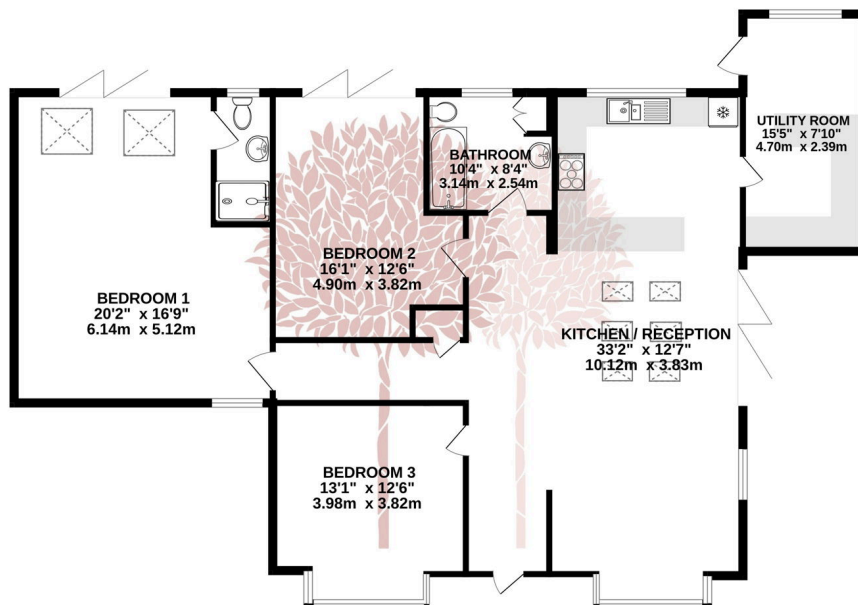
CONTEMPORARY LIVING IN AN IDYLIC COUNTRYSIDE LOCATION - Beautifully presented, completely remodelled and extended bungalow, set in wonderful wraparound gardens with 360 degree views and with additional paddock.



Key Features

- Contemporary three bedroom, one level home
- 4.22 acres approx
- Superb master bedroom with ensuite
- Scope to extend (subject to planning permission)
- Oil fuelled central heating & contemporary insulation
- Exceptional 360-degree views across the Chew Valley
- Open plan living space with partially vaulted ceilings
- Close to amenities
- Wrap around gardens and enclosed paddock
- EPC D Council Tax Band E

GROUND FLOOR
1463 sq.ft. (135.9 sq.m.) approx.



TOTAL FLOOR AREA: 1463 sq.ft. (135.9 sq.m.) approx.

Whilst every attempt has been made to ensure the accuracy of the floorplan contained here, measurements of doors, windows, rooms and any other items are approximate and no responsibility is taken for any error, omission or mis-statement. This plan is for illustrative purposes only and should be used as such by any prospective purchaser. The services, systems and appliances shown have not been tested and no guarantee as to their operability or efficiency can be given.

Made with Metropix ©2023

