

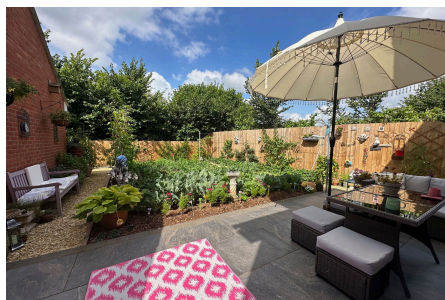
debbie fortune

ESTATE AGENTS

## Muntjac Road, Langford

£450,000

🛏 4 🚗 2 🚲 1

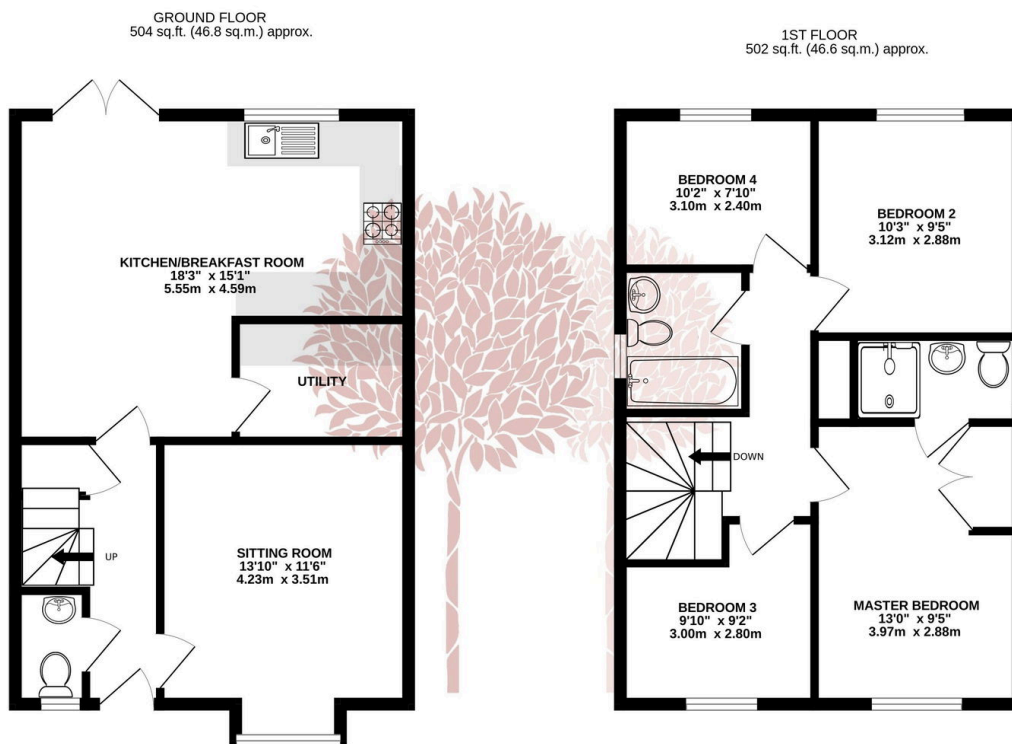


A four bedroom detached family home backing onto countryside with a modern interior, off street parking and pretty gardens.



## Key Features

- Contemporary detached family home
- Backing onto countryside
- Four bedrooms
- Off street parking
- Landscaped garden with new patio area and large veggie patch
- Walking distance to Churchill Primary and Secondary School
- Energy Performance Rating B
- Viewing Advised
- Council Tax band E
- Family Bathroom, Ensuite and Downstairs Cloakroom



TOTAL FLOOR AREA: 1006 sq.ft. (93.5 sq.m.) approx.

Whilst every attempt has been made to ensure the accuracy of the floorplan contained here, measurements of doors, windows, rooms and any other items are approximate and no responsibility is taken for any error, omission or mis-statement. This plan is for illustrative purposes only and should be used as such by any prospective purchaser. The services, systems and appliances shown have not been tested and no guarantee as to their operability or efficiency can be given.

Made with Metropix ©2024

