

Upper New Road, Cheddar

£575,000

🛏 4 🚿 3 🛋 4



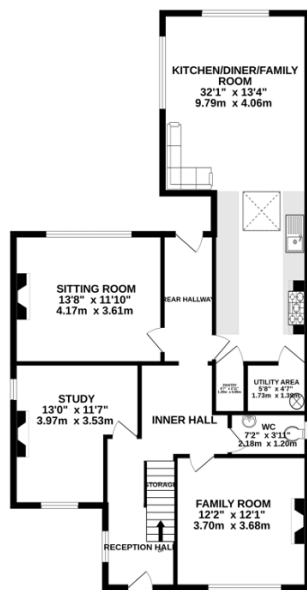
OUTSTANDING 1920's FAMILY HOME IN CHEDDAR - This beautifully presented, detached house has been transformed to offer a very modern, stylish and versatile accommodation with the superb addition of a large barn workshop and annexe with a wonderful bar room and a west facing rear garden reaching over 100ft. Viewing is essential!



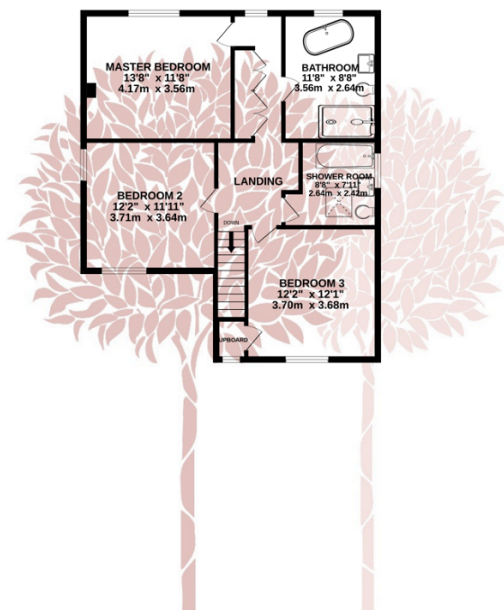
Key Features

- Beautifully presented three bedroom detached family home
- Outstanding kitchen extension and many other stylish recent improvements
- Three versatile reception rooms with a gorgeous sitting room overlooking the garden, plus dining room and study
- Two beautifully appointed bathrooms
- Large 581 sq ft party barn with bar and excellent storage
- Pretty west facing garden
- Generous off street parking
- Excellent convenient position to enjoy the village amenities and the lovely Strawberry Line Foot and Cycle Path
- EPC rating C
- Council tax band E

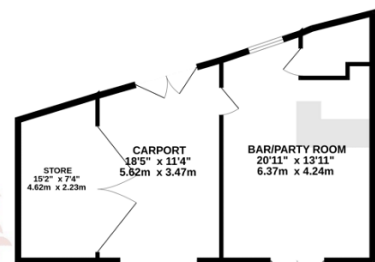
GROUND FLOOR
1042 sq.ft. (96.8 sq.m.) approx.



1ST FLOOR
757 sq.ft. (70.4 sq.m.) approx.



PARTY BARN/OUTBUILDING
581 sq.ft. (54.0 sq.m.) approx.



TOTAL FLOOR AREA : 2381 sq.ft. (221.2 sq.m.) approx.

Whilst every attempt has been made to ensure the accuracy of the floorplan contained here, measurements of doors, windows, rooms and any other items are approximate and no responsibility is taken for any error, omission or mis-statement. This plan is for illustrative purposes only and should be used as such by any prospective purchaser. The services, systems and appliances shown have not been tested and no guarantee as to their operability or efficiency can be given.
Made with Metropix ©2024

