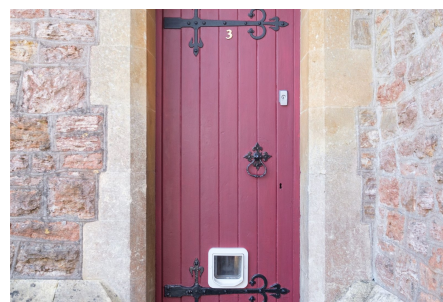


Street End, Blagdon

£575,000

🛏 4 🚿 3 🚗 1

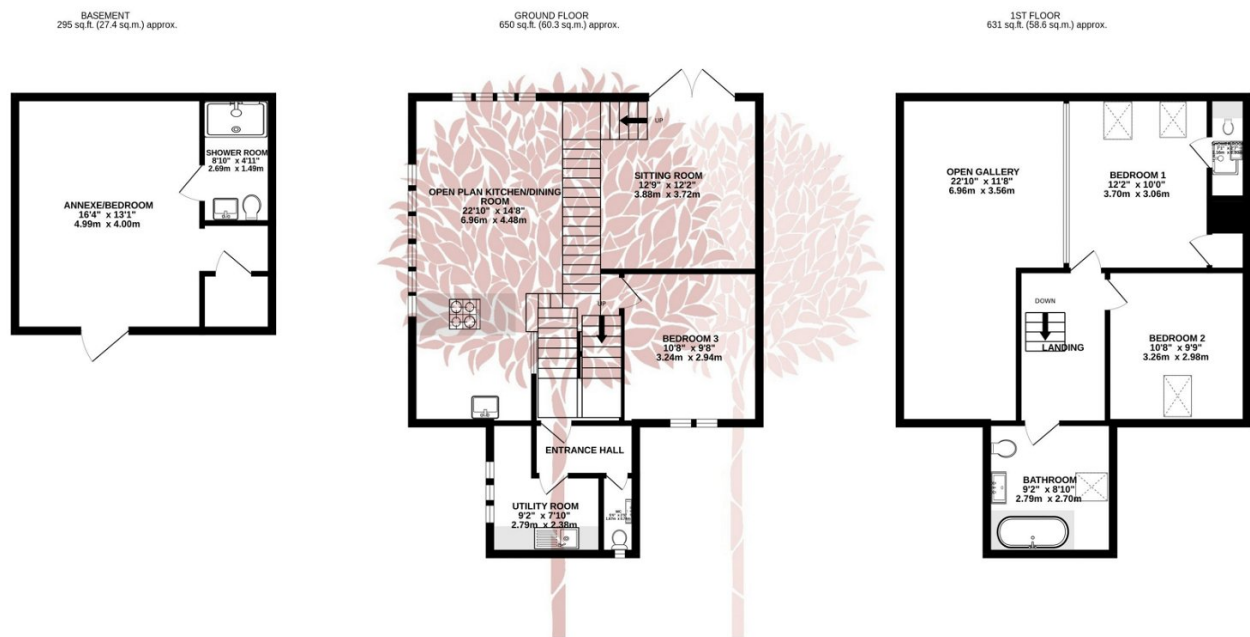


A striking period conversion of the former Methodist Church in Blagdon. Combining wonderful origin features and modern contemporary refinements there are three/four bedrooms, an incredible open plan living/kitchen/diner with a vaulted ceiling, three bathrooms, utility and a lovely south and east facing garden and off street parking.



Key Features

- Beautiful conversion of the former village Methodist church
- Unique character packed interior with a host of period features
- Convenient central village position, close to amenities
- Three principal bedrooms plus additional one bedroom studio
- Stunning open plan & split level, kitchen/ dining/sitting room
- Three bathrooms including two en-suite
- Discrete garden to two aspects with garden shed and decked seating area
- Separate utility room and ground floor cloakroom
- Off street parking
- EPC rating TBC, Council tax band E



TOTAL FLOOR AREA: 1576 sq.ft. (146.4 sq.m.) approx.

Whilst every attempt has been made to ensure the accuracy of the floorplan contained here, measurements of doors, windows, rooms and any other items are approximate and no responsibility is taken for any error, omission or mis-statement. This plan is for illustrative purposes only and should be used as such by any prospective purchaser. The services, systems and appliances shown have not been tested and no guarantee as to their operability or efficiency can be given.
Made with Metropix ©2024

