

Long Ashton Road, Long Ashton

Guide Price £640,000

🛏 3 🚿 2 🛋 2

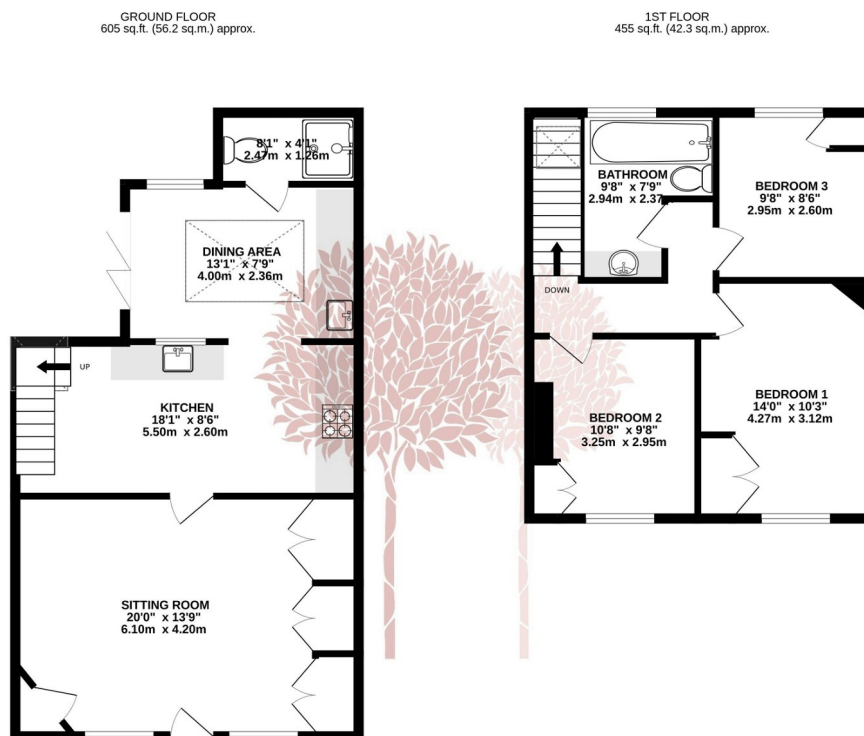


AN EXCEPTIONAL PERIOD PROPERTY with fantastic proportions and an immaculate interior. This property has been renovated in recent years and offers a contemporary finish with plenty of character features.



Key Features

- Character cottage in the heart of Long Ashton village
- Large sitting room with feature fireplace
- Downstairs bathroom and utility space
- Handsome period home
- Outstanding landscaped garden with far reaching views
- Three double bedrooms, two bathrooms
- Extended to the rear by an impressive garden/dining room
- Beautiful décor and sensitively renovated
- Popular village location
- EPC rating D, council tax band C



TOTAL FLOOR AREA: 1060 sq.ft. (98.5 sq.m.) approx.

Whilst every attempt has been made to ensure the accuracy of the floorplan contained here, measurements of doors, windows, rooms and any other items are approximate and no responsibility is taken for any error, omission or mis-statement. This plan is for illustrative purposes only and should be used as such by any prospective purchaser. The services, systems and appliances shown have not been tested and no guarantee as to their operability or efficiency can be given.

Made with Metropix ©2024

